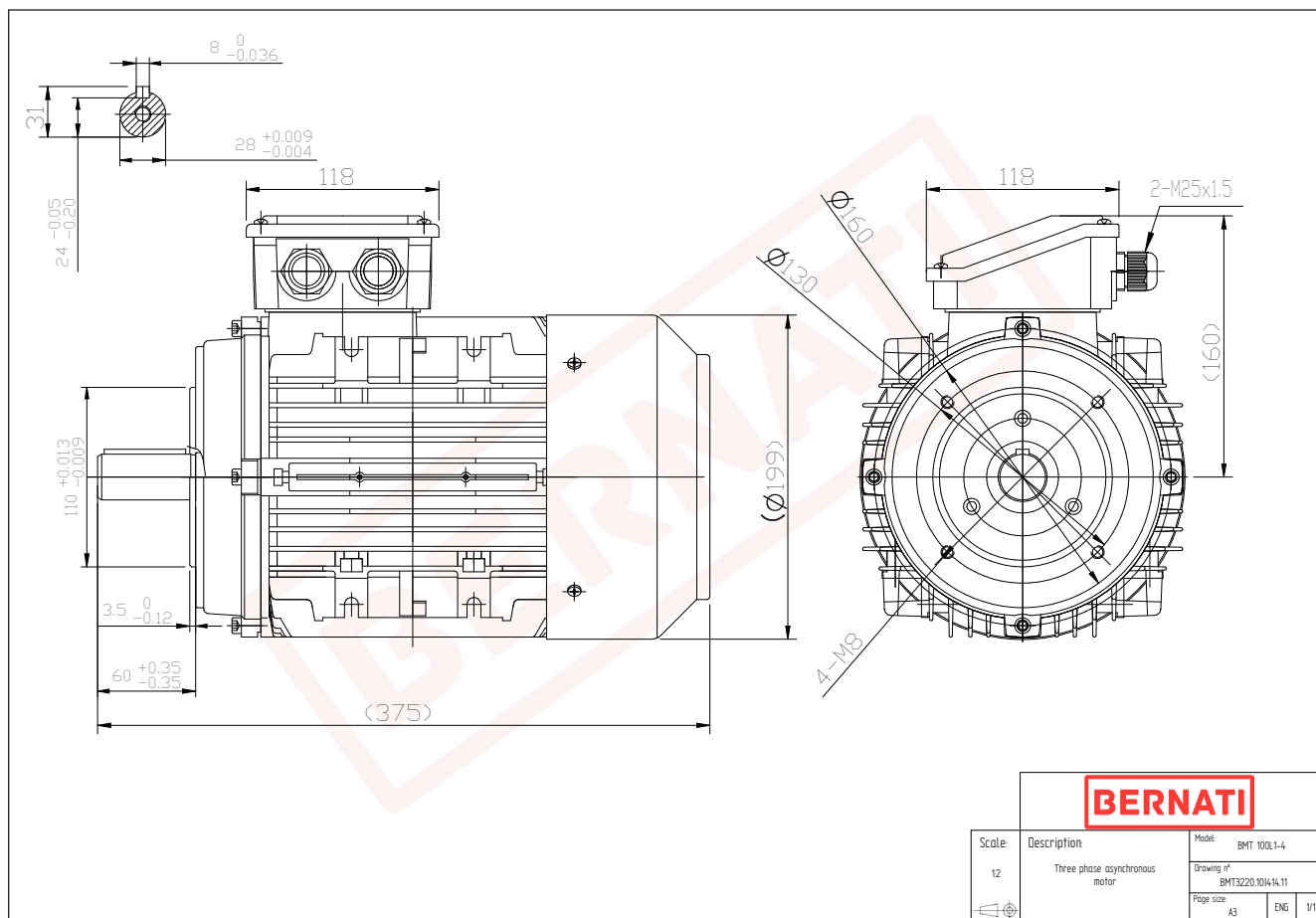


BMT Series - Aluminum frame three phase low voltage electric motor



BMT

Product Code	BMT3220.10L414.11
Motor Type/Frame	BMT 100L1-4
Mounting	IM B14
Efficiency Class	IE3
Output Power (kW)	2.20
Speed (rpm)	1450
Tension (V)	230/400
Frequency (Hz)	50
Current (A)	4.47
Power factor (Cos Ø)	0.82
Poles	4
Insulation Class	F
IP Class	IP55
50% Efficiency	86.2
75% Efficiency	87.2
100% Efficiency	86.7
Torque (Nm)	14.49
Tstart / Tnominal	2.90
Istart / Inominal	8.00
Tmax / Tnominal	3.50
Noise (dB)	64
PTC Thermistor	PTC 130
Weight (Kg)	24
DE Bearing	6206 2RZ C3
NDE Bearing	6206 2RZ C3