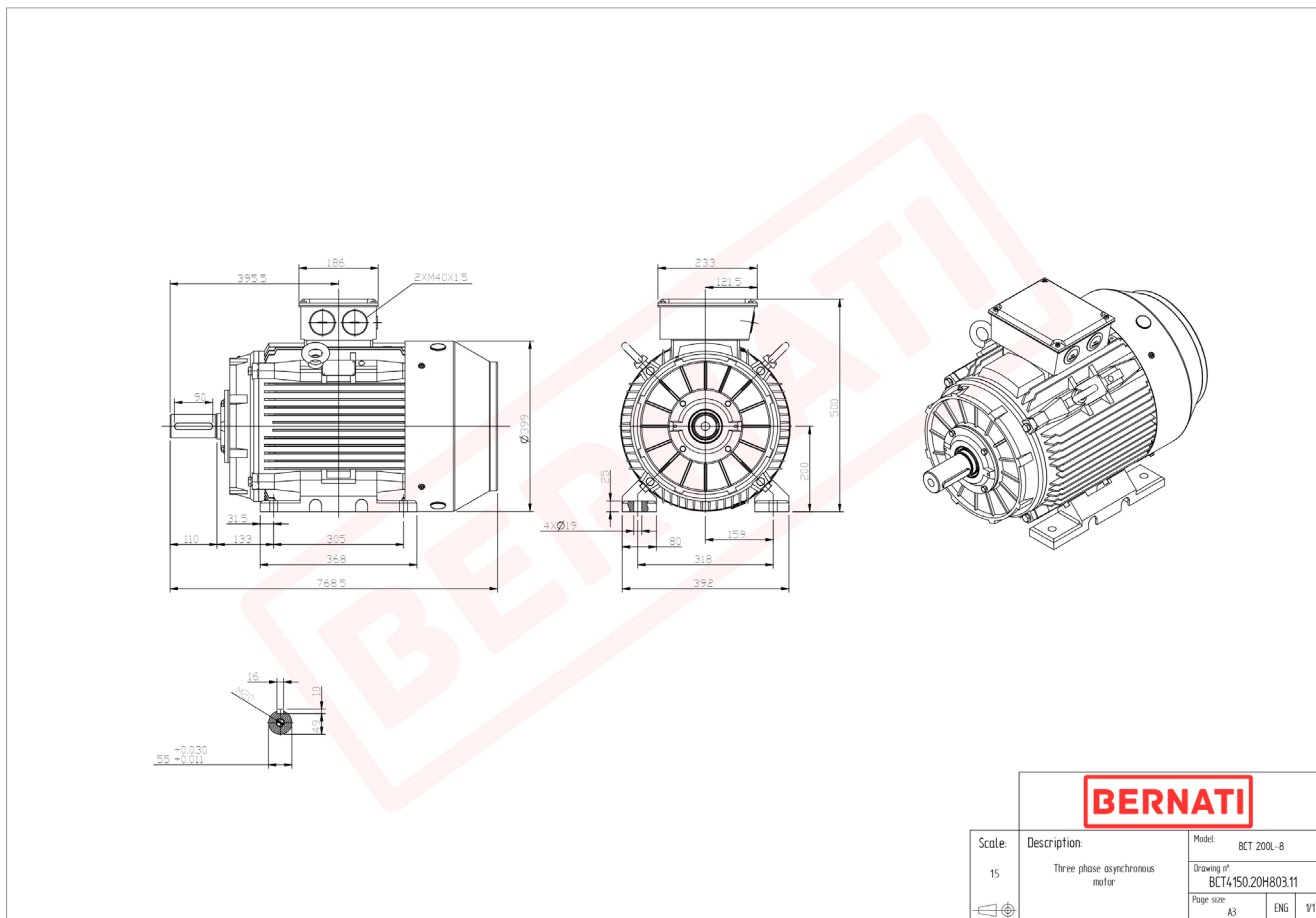


# Technical Datasheet

**BERNATI**

BCT Series - Cast iron frame three phase low voltage electric motor



## BCT

Product Code	BCT4150.20H803.11
Motor Type/Frame	BCT 200L-8
Mounting	IM B3
Efficiency Class	IE4
Output Power (kW)	15.00
Speed (rpm)	735
Tension (V)	230/400
Frequency (Hz)	50
Current (A)	31.70
Power factor (Cos Ø)	0.80
Poles	8
Insulation Class	F
IP Class	IP55
50% Efficiency	91.0
75% Efficiency	91.4
100% Efficiency	91.2
Torque (Nm)	195.00
Tstart / Tnominal	1.80
Istart / Inominal	8.00
Tmax / Tnominal	2.00
Noise (dB)	73
PTC Thermistor	PTC 130
Weight (Kg)	220
DE Bearing	6312 C3
NDE Bearing	6312 C3