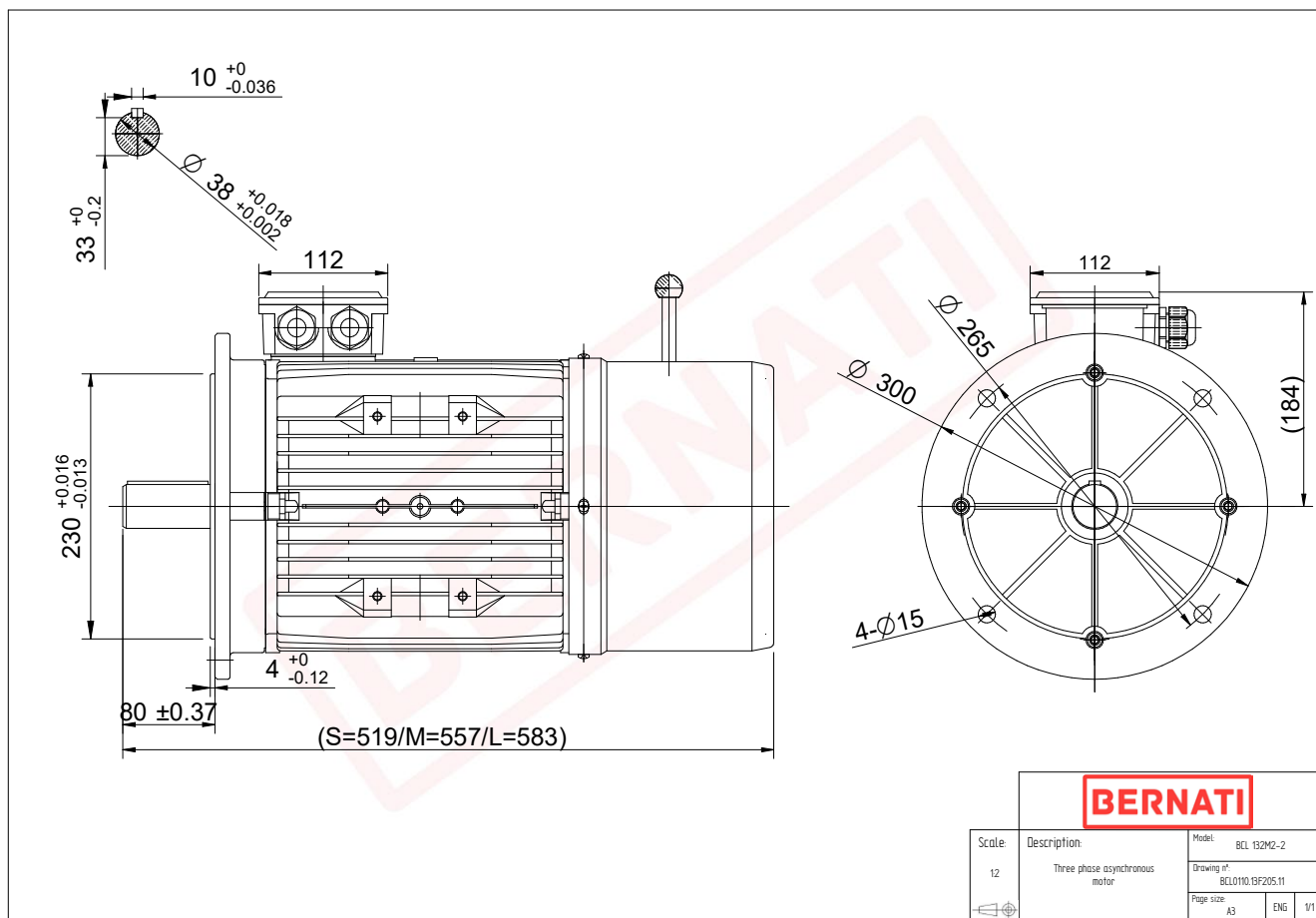


Technical Datasheet

BERNATI

BCL Series - Aluminum frame three phase low voltage electric motor



BCL

Product Code	BCL0110.13F205.11
Motor Type/Frame	BCL 132M1-2
Mounting	IM B5
Output Power (kW)	9.20
Speed (rpm)	2930
Tension (V)	230/400
Frequency (Hz)	50
Current (A)	17.00
Power factor (Cos Ø)	0.90
Poles	2
Insulation Class	F
IP Class	IP55
50% Efficiency	86.4
75% Efficiency	88.0
100% Efficiency	88.0
Tstart / Tnominal	2.00
Istart / Inominal	7.50
Tmax / Tnominal	2.20
Noise (dB)	81
PTC Thermistor	N/A
Weight (Kg)	60
DE Bearing	6308 2RZ C3
NDE Bearing	6208 2RZ C3