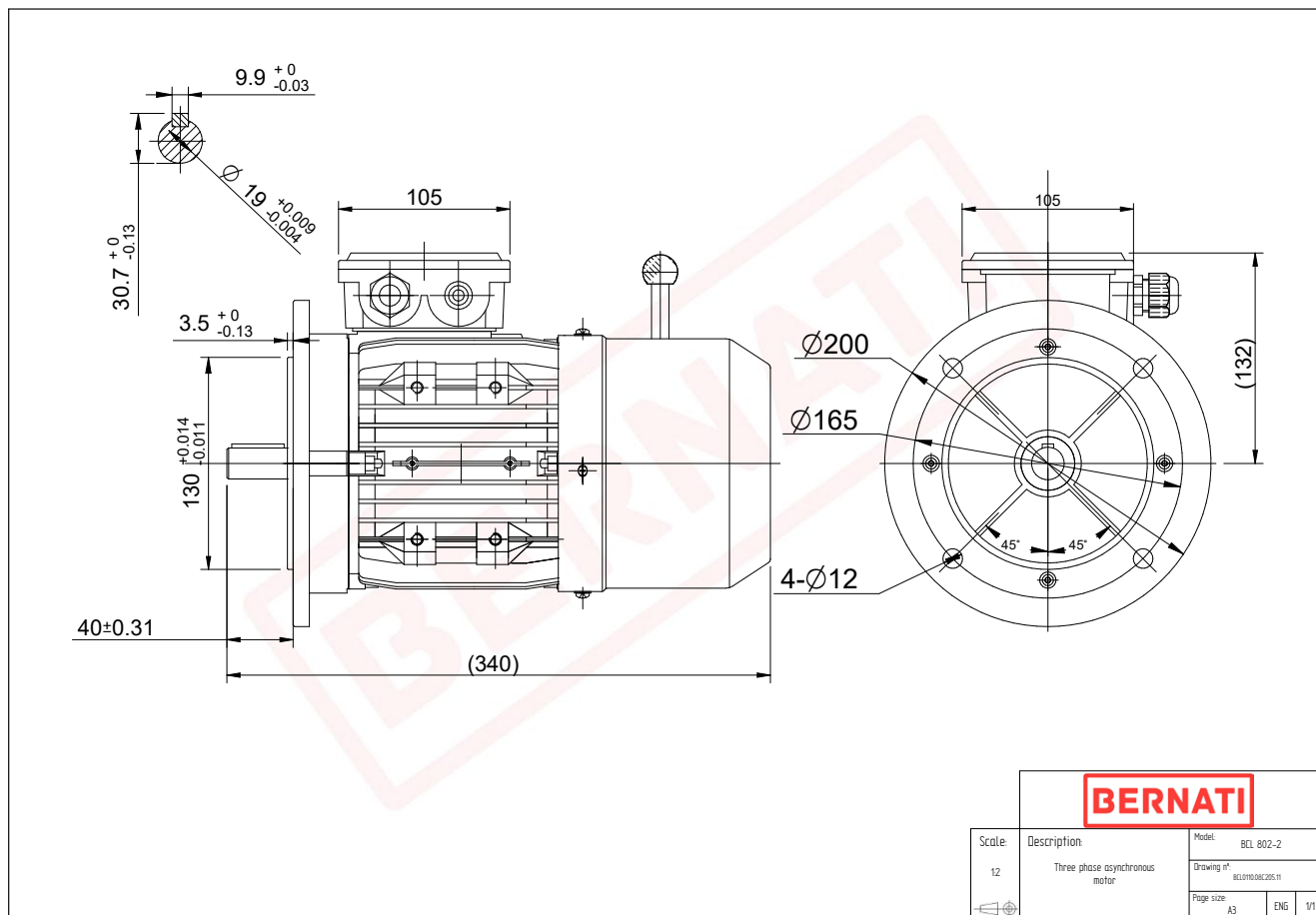


Technical Datasheet

BERNATI

BCL Series - Aluminum frame three phase low voltage electric motor



BCL

Product Code	BCL0110.08C205.11
Motor Type/Frame	BCL 802-2
Mounting	IM B5
Output Power (kW)	1.10
Speed (rpm)	2840
Tension (V)	230/400
Frequency (Hz)	50
Current (A)	2.40
Power factor (Cos Ø)	0.80
Poles	2
Insulation Class	F
IP Class	IP55
50% Efficiency	77.7
75% Efficiency	79.8
100% Efficiency	79.0
Tstart / Tnominal	2.60
Istart / Inominal	6.10
Tmax / Tnominal	3.10
Noise (dB)	67
PTC Thermistor	N/A
Weight (Kg)	12
DE Bearing	6204 2RZ C3
NDE Bearing	6204 2RZ C3