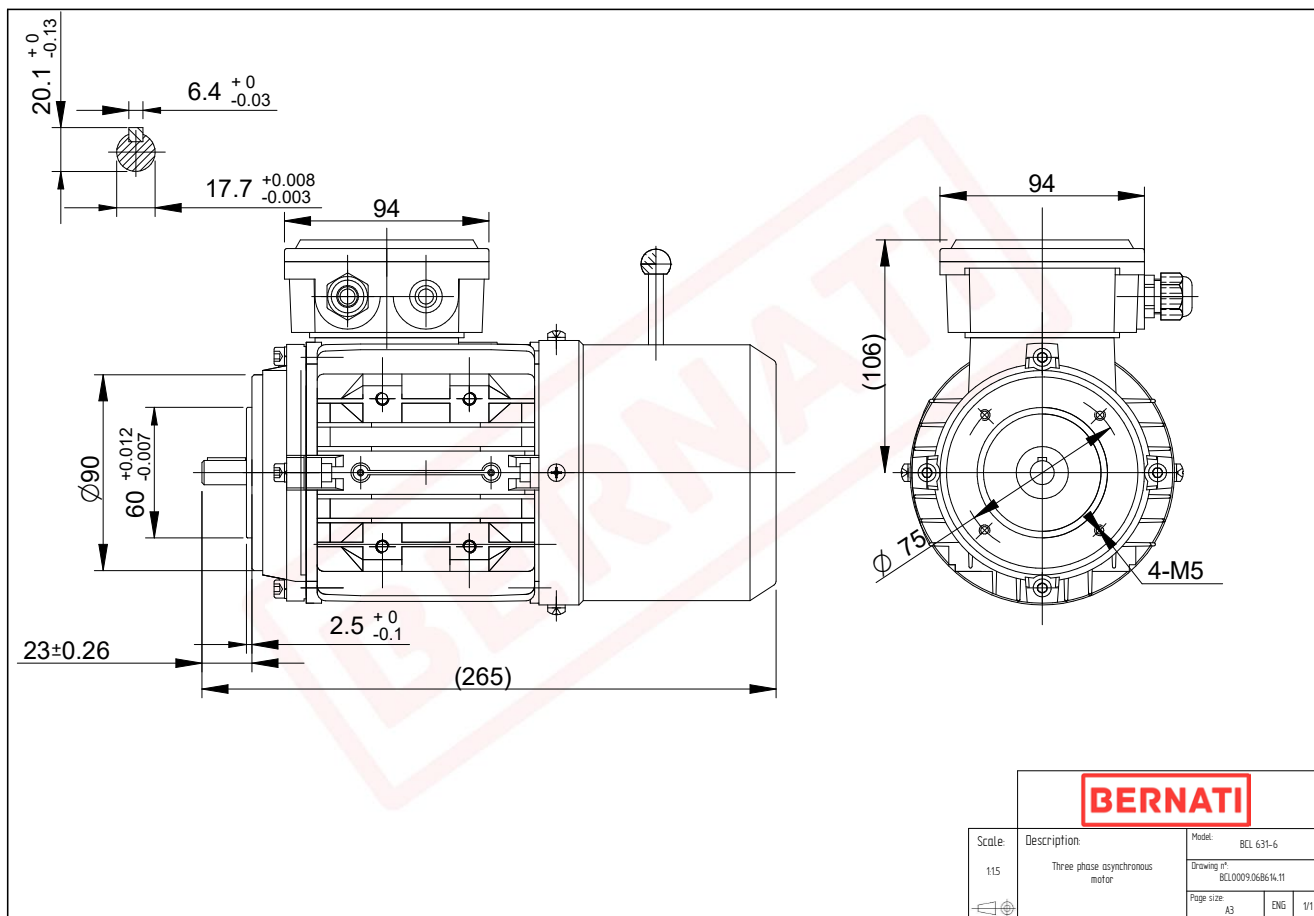


Technical Datasheet

BERNATI

BCL Series - Aluminum frame three phase low voltage electric motor



BCL

Product Code	BCL0009.06B614.11
Motor Type/Frame	BCL 631-6
Mounting	IM B14
Output Power (kW)	0.09
Speed (rpm)	890
Tension (V)	230/400
Frequency (Hz)	50
Current (A)	0.40
Power factor (Cos Ø)	0.60
Poles	6
Insulation Class	F
IP Class	IP55
50% Efficiency	39.8
75% Efficiency	47.6
100% Efficiency	50.7
Tstart / Tnominal	2.00
Istart / Inominal	2.90
Tmax / Tnominal	2.20
Noise (dB)	50
PTC Thermistor	N/A
Weight (Kg)	5
DE Bearing	6201 2RZ C3
NDE Bearing	6201 2RZ C3