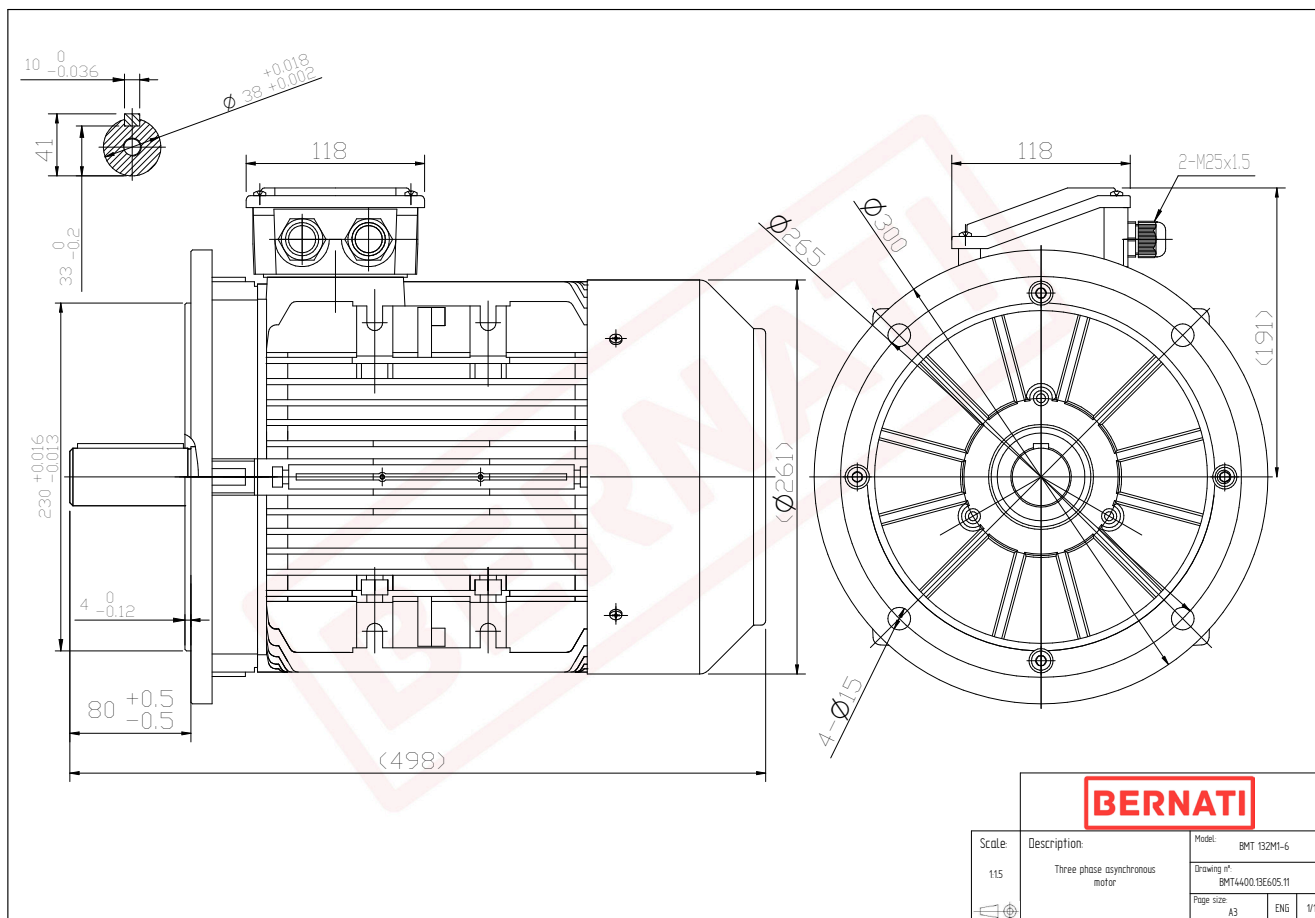


Technical Datasheet

BERNATI

BMT Series - Aluminum frame three phase low voltage electric motor



BMT

Product Code	BMT4400.13E605.11
Motor Type/Frame	BMT 132M1-6
Mounting	IM B5
Efficiency Class	IE4
Output Power (kW)	4.00
Speed (rpm)	975
Tension (V)	230/400
Frequency (Hz)	50
Current (A)	8.70
Power factor (Cos Ø)	0.70
Poles	6
Insulation Class	F
IP Class	IP55
50% Efficiency	88.8
75% Efficiency	89.8
100% Efficiency	89.5
Torque (Nm)	40.80
Tstart / Tnominal	2.80
Istart / Inominal	8.00
Tmax / Tnominal	1.80
Noise (dB)	68
PTC Thermistor	PTC 130
Weight (Kg)	55
DE Bearing	6308 2RZ C3
NDE Bearing	6208 2RZ C3