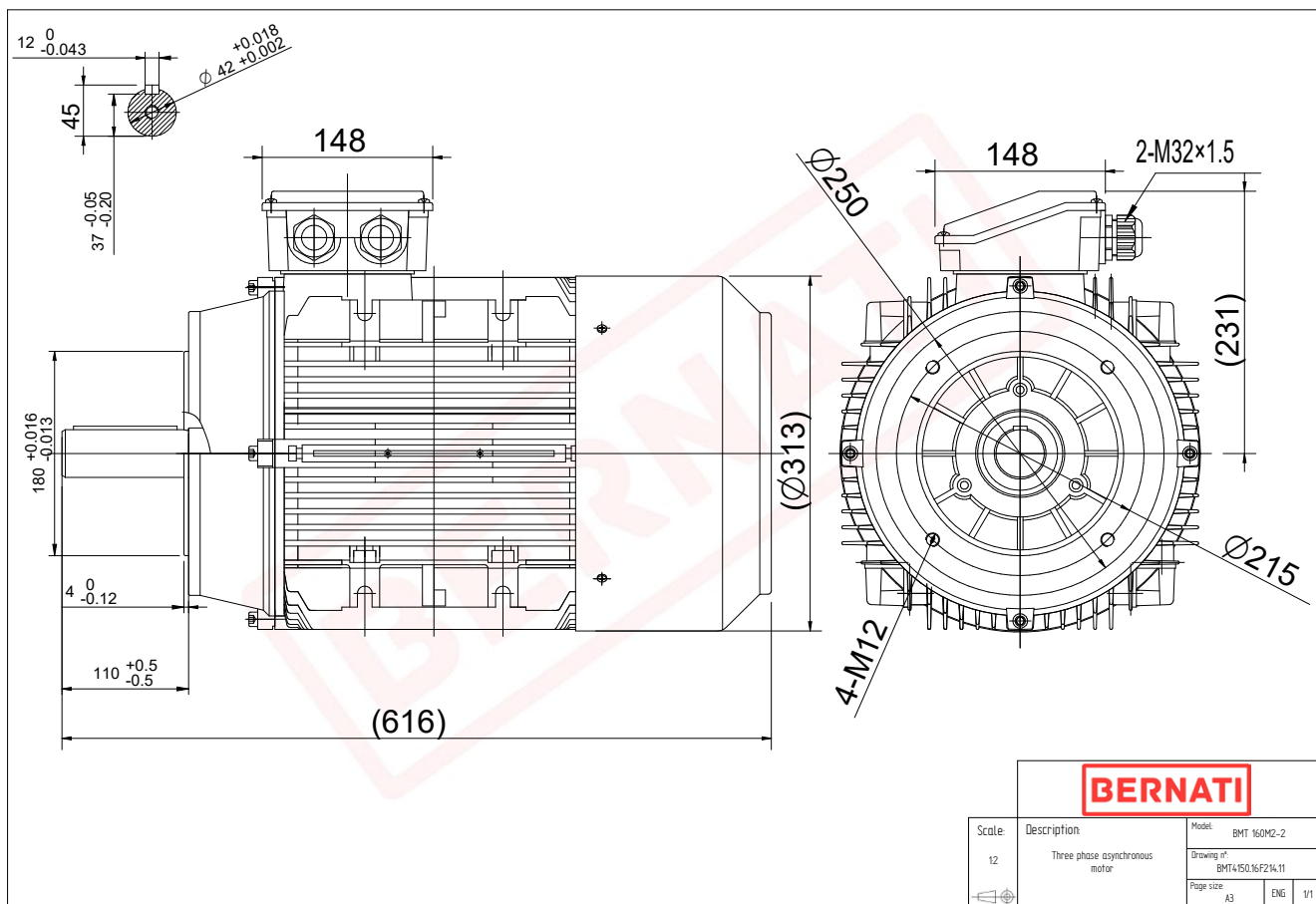


Technical Datasheet

BERNATI

BMT Series - Aluminum frame three phase low voltage electric motor



BMT	
Product Code	BMT4150.16F214.11
Motor Type/Frame	BMT 160M2-2
Mounting	IM B14
Efficiency Class	IE4
Output Power (kW)	15.00
Speed (rpm)	2960
Tension (V)	230/400
Frequency (Hz)	50
Current (A)	25.20
Power factor (Cos Ø)	0.90
Poles	2
Insulation Class	F
IP Class	IP55
50% Efficiency	92.8
75% Efficiency	93.8
100% Efficiency	93.3
Torque (Nm)	50.40
Tstart / Tnominal	3.60
Istart / Inominal	10.00
Tmax / Tnominal	2.50
Noise (dB)	86
PTC Thermistor	PTC 130
Weight (Kg)	116
DE Bearing	6309 2RZ C3
NDE Bearing	6209 2RZ C3