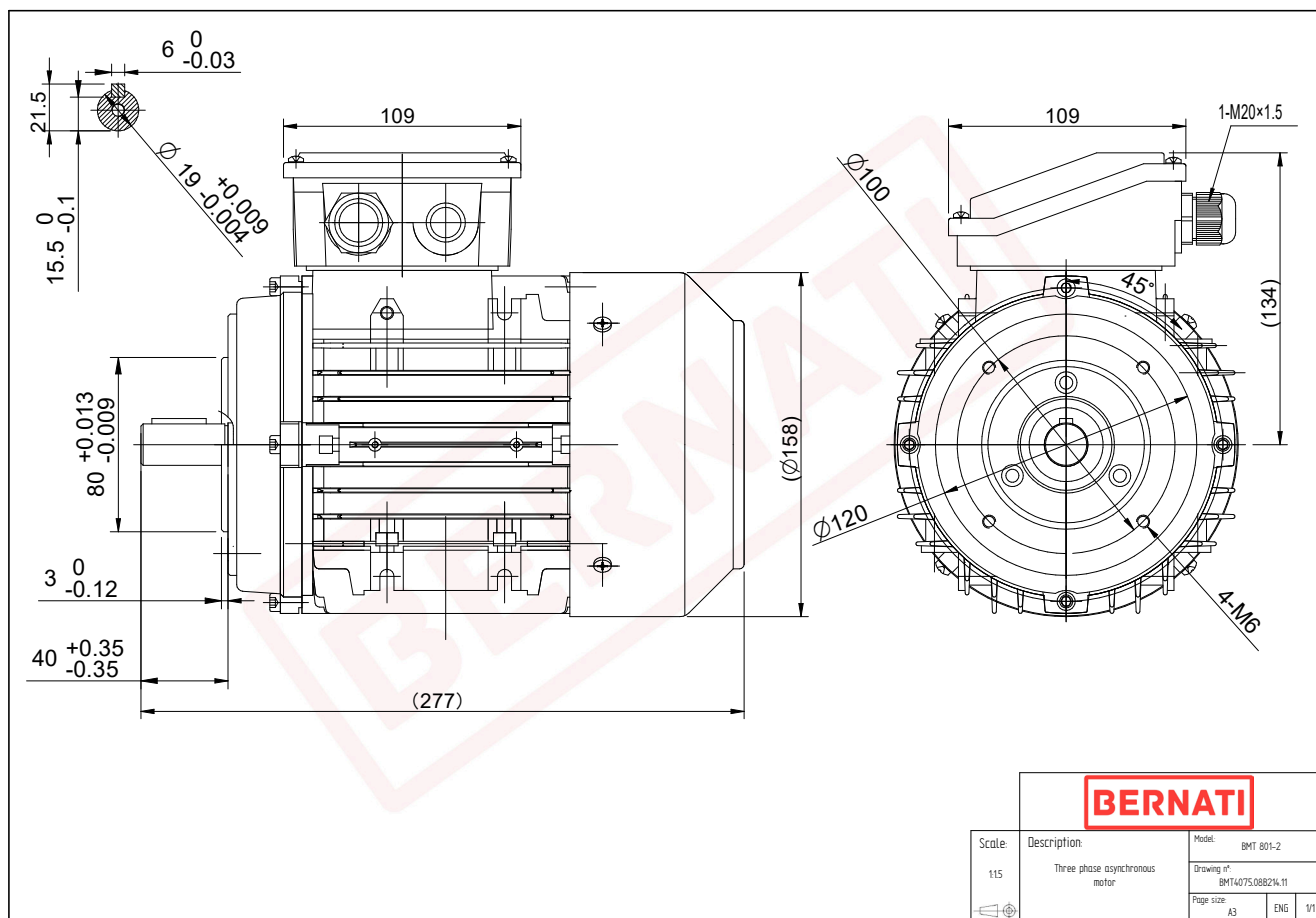


# Technical Datasheet

**BERNATI**

BMT Series - Aluminum frame three phase low voltage electric motor



<b>BMT</b>	
Product Code	BMT4075.08B214.11
Motor Type/Frame	BMT 801-2
Mounting	IM B14
Efficiency Class	IE4
Output Power (kW)	0.75
Speed (rpm)	2900
Tension (V)	230/400
Frequency (Hz)	50
Current (A)	1.60
Power factor (Cos Ø)	0.80
Poles	2
Insulation Class	F
IP Class	IP55
50% Efficiency	81.5
75% Efficiency	83.6
100% Efficiency	83.5
Torque (Nm)	2.60
Tstart / Tnominal	3.70
Istart / Inominal	8.80
Tmax / Tnominal	3.90
Noise (dB)	67
PTC Thermistor	PTC 130
Weight (Kg)	10
DE Bearing	6204 2RZ C3
NDE Bearing	6204 2RZ C3