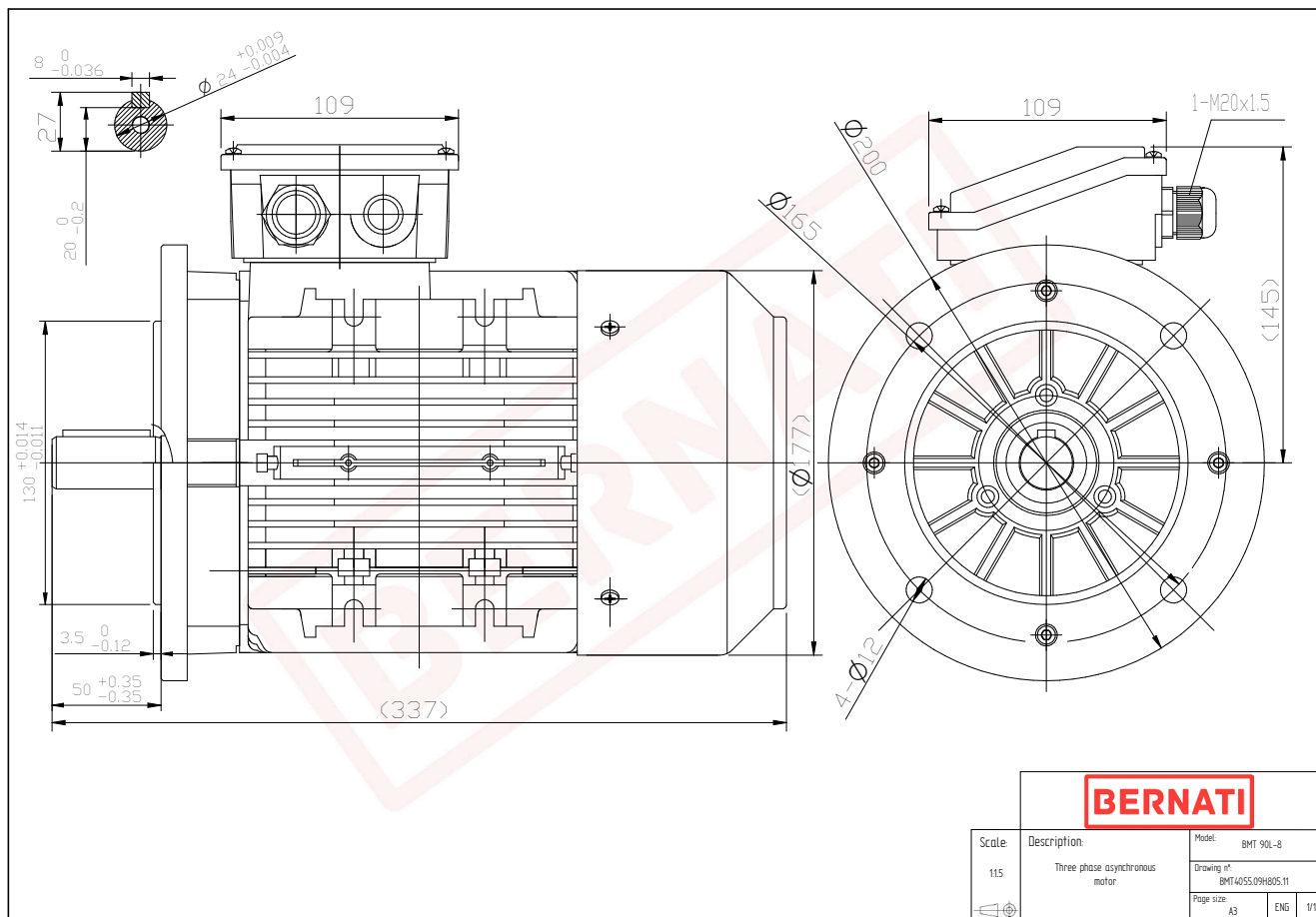


Technical Datasheet

BERNATI

BMT Series - Aluminum frame three phase low voltage electric motor



BMT	
Product Code	BMT4055.09H805.11
Motor Type/Frame	BMT 90L-8
Mounting	IM B5
Efficiency Class	IE4
Output Power (kW)	0.55
Speed (rpm)	710
Tension (V)	230/400
Frequency (Hz)	50
Current (A)	2.00
Power factor (Cos Ø)	0.50
Poles	8
Insulation Class	F
IP Class	IP55
50% Efficiency	70.1
75% Efficiency	75.4
100% Efficiency	77.0
Torque (Nm)	7.70
Tstart / Tnominal	2.50
Istart / Inominal	4.00
Tmax / Tnominal	2.20
Noise (dB)	56
PTC Thermistor	PTC 130
Weight (Kg)	18
DE Bearing	6205 2RZ C3
NDE Bearing	6205 2RZ C3