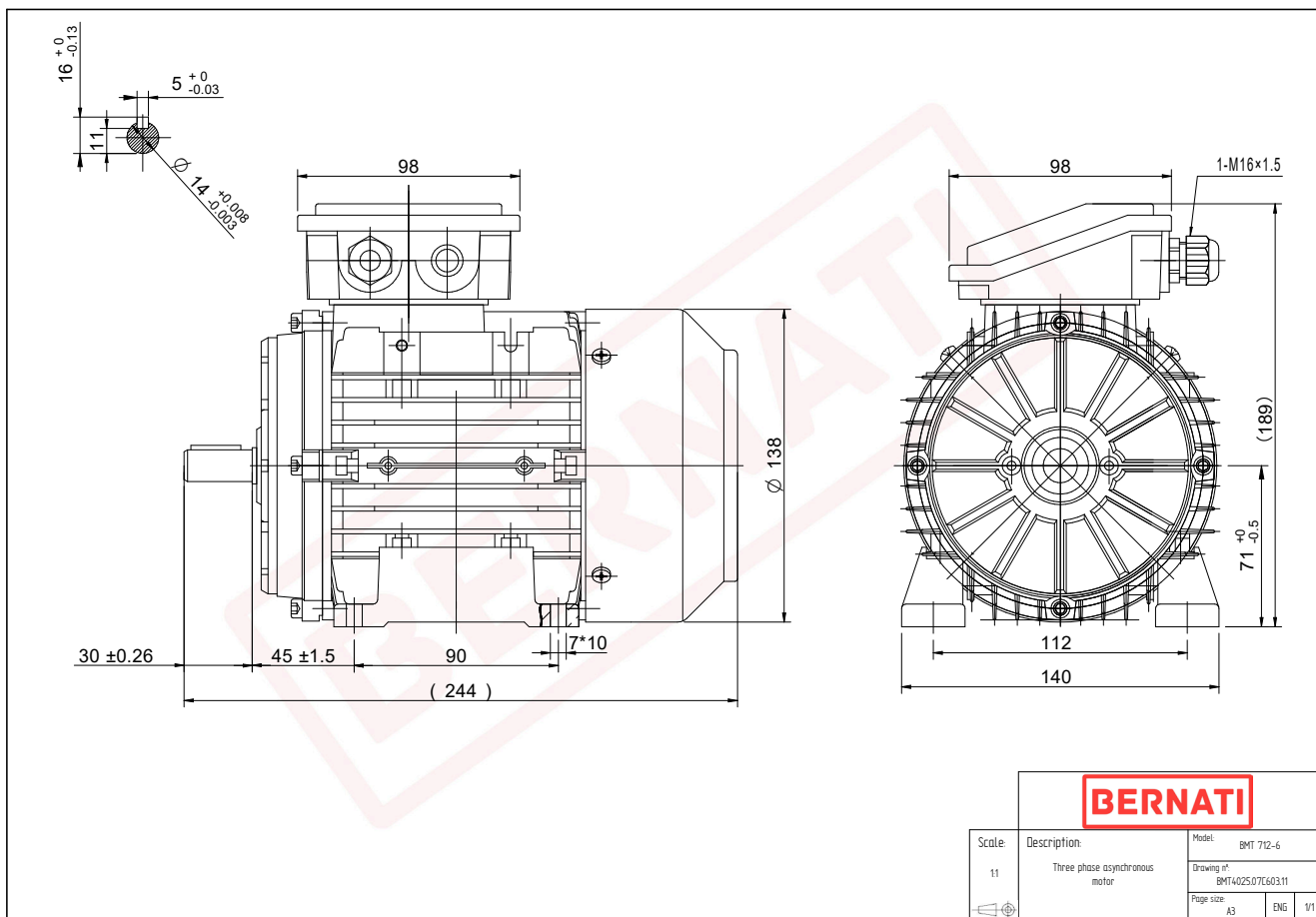


Technical Datasheet

BERNATI

BMT Series - Aluminum frame three phase low voltage electric motor



BMT	
Product Code	BMT4025.07C603.11
Motor Type/Frame	BMT 712-6
Mounting	IM B3
Efficiency Class	IE4
Output Power (kW)	0.25
Speed (rpm)	940
Tension (V)	230/400
Frequency (Hz)	50
Current (A)	0.80
Power factor (Cos Ø)	0.60
Poles	6
Insulation Class	F
IP Class	IP55
50% Efficiency	65.3
75% Efficiency	71.5
100% Efficiency	74.1
Torque (Nm)	2.70
Tstart / Tnominal	2.80
Istart / Inominal	4.50
Tmax / Tnominal	2.40
Noise (dB)	52
PTC Thermistor	PTC 130
Weight (Kg)	7
DE Bearing	6202 2RZ C3
NDE Bearing	6202 2RZ C3