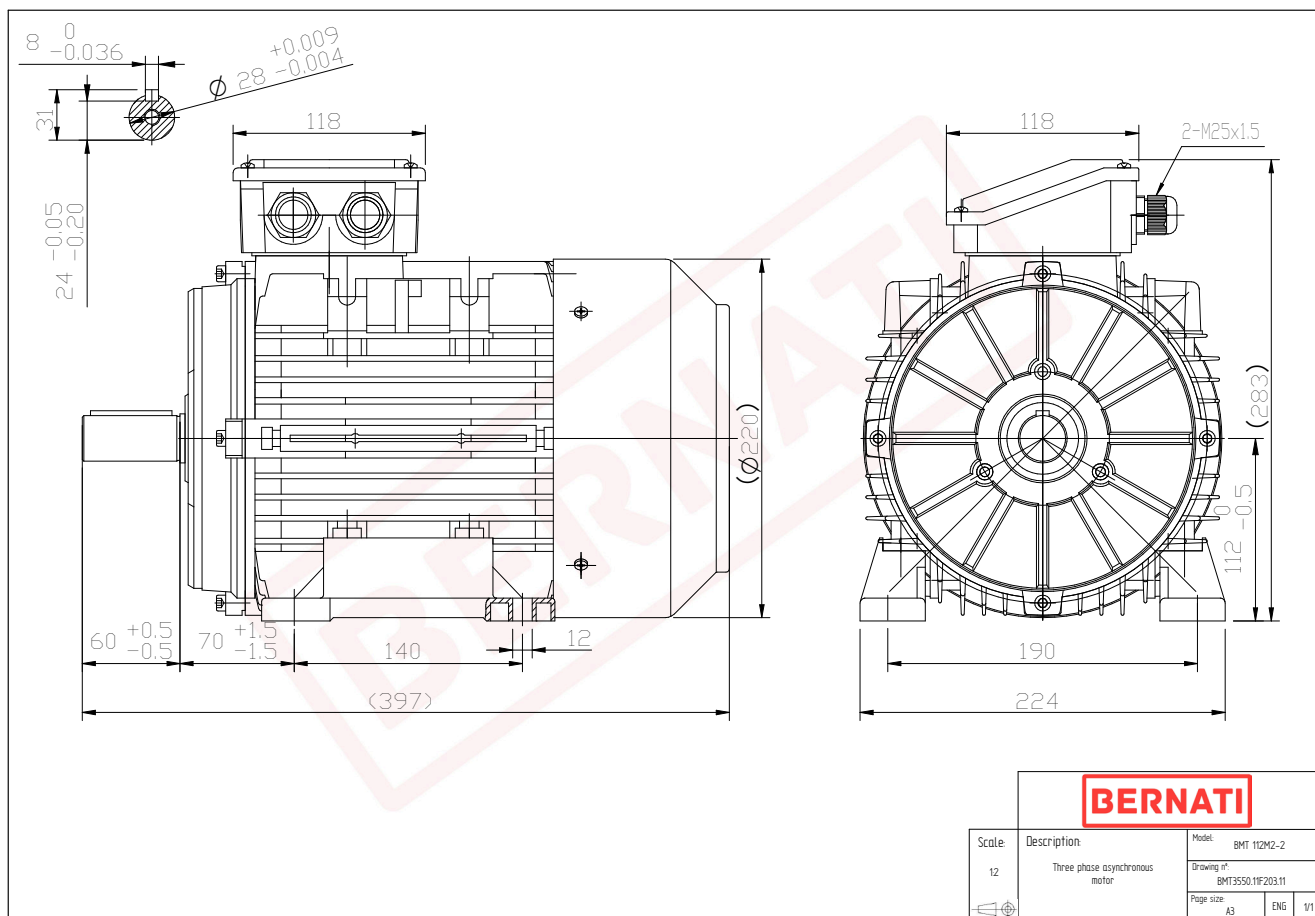


Technical Datasheet

BERNATI

BMT Series - Aluminum frame three phase low voltage electric motor



BMT

Product Code	BMT3550.11F203.11
Motor Type/Frame	BMT 112M2-2
Mounting	IM B3
Efficiency Class	IE3
Output Power (kW)	5.50
Speed (rpm)	2920
Tension (V)	230/400
Frequency (Hz)	50
Current (A)	9.78
Power factor (Cos Ø)	0.91
Poles	2
Insulation Class	F
IP Class	IP55
50% Efficiency	89.1
75% Efficiency	89.6
100% Efficiency	89.2
Torque (Nm)	17.99
Tstart / Tnominal	3.30
Istart / Inominal	11.90
Tmax / Tnominal	4.20
Noise (dB)	78
PTC Thermistor	PTC 130
Weight (Kg)	36
DE Bearing	6306 2RZ C3
NDE Bearing	6206 2RZ C3