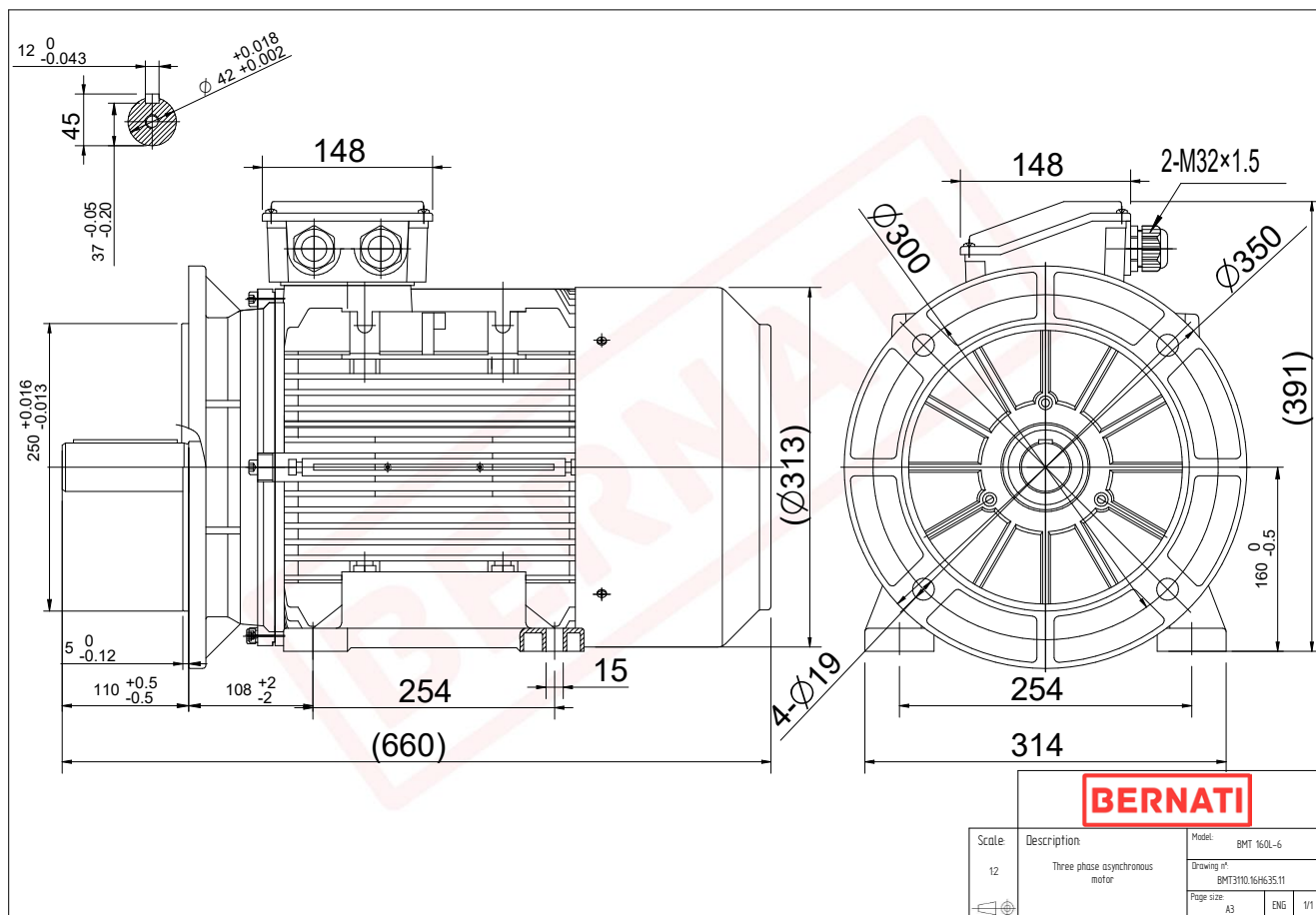


Technical Datasheet

BERNATI

BMT Series - Aluminum frame three phase low voltage electric motor



BMT

Product Code	BMT3110.16H635.11
Motor Type/Frame	BMT 160L-6
Mounting	IM B3/B5
Efficiency Class	IE3
Output Power (kW)	11.00
Speed (rpm)	975
Tension (V)	230/400
Frequency (Hz)	50
Current (A)	22.54
Power factor (Cos Ø)	0.78
Poles	6
Insulation Class	F
IP Class	IP55
50% Efficiency	89.8
75% Efficiency	90.8
100% Efficiency	90.3
Torque (Nm)	107.74
Tstart / Tnominal	2.70
Istart / Inominal	8.40
Tmax / Tnominal	2.90
Noise (dB)	73
PTC Thermistor	PTC 130
Weight (Kg)	105
DE Bearing	6309 2RZ C3
NDE Bearing	6209 2RZ C3