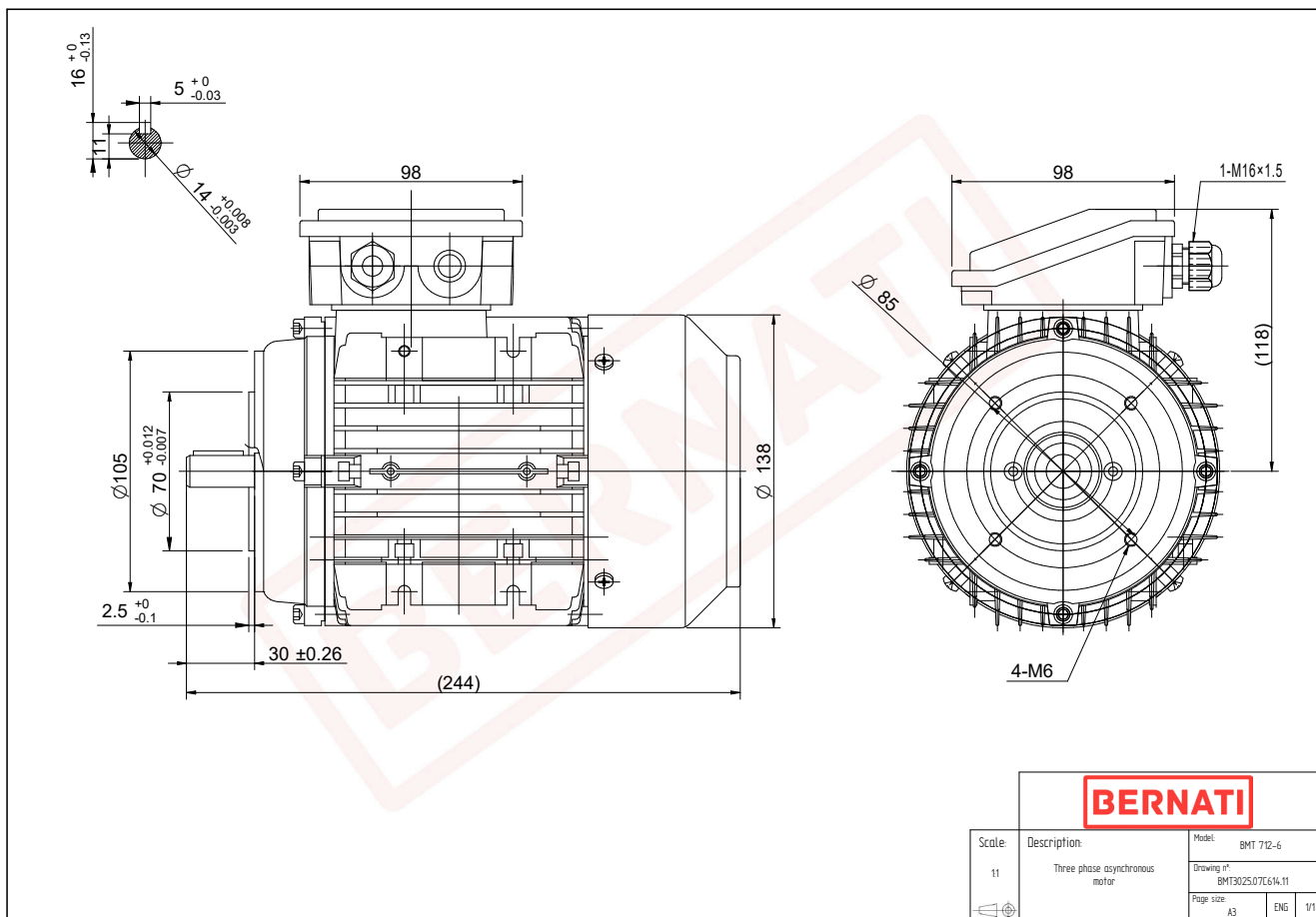


Technical Datasheet

BERNATI

BMT Series - Aluminum frame three phase low voltage electric motor



BMT

Product Code	BMT3025.07C614.11
Motor Type/Frame	BMT 712-6
Mounting	IM B14
Efficiency Class	IE3
Output Power (kW)	0.25
Speed (rpm)	920
Tension (V)	230/400
Frequency (Hz)	50
Current (A)	0.81
Power factor (Cos Ø)	0.65
Poles	6
Insulation Class	F
IP Class	IP55
50% Efficiency	61.2
75% Efficiency	67.2
100% Efficiency	68.6
Torque (Nm)	2.60
Tstart / Tnominal	2.20
Istart / Inominal	3.70
Tmax / Tnominal	2.50
Noise (dB)	52
PTC Thermistor	PTC 130
Weight (Kg)	6
DE Bearing	6202 2RZ C3
NDE Bearing	6202 2RZ C3