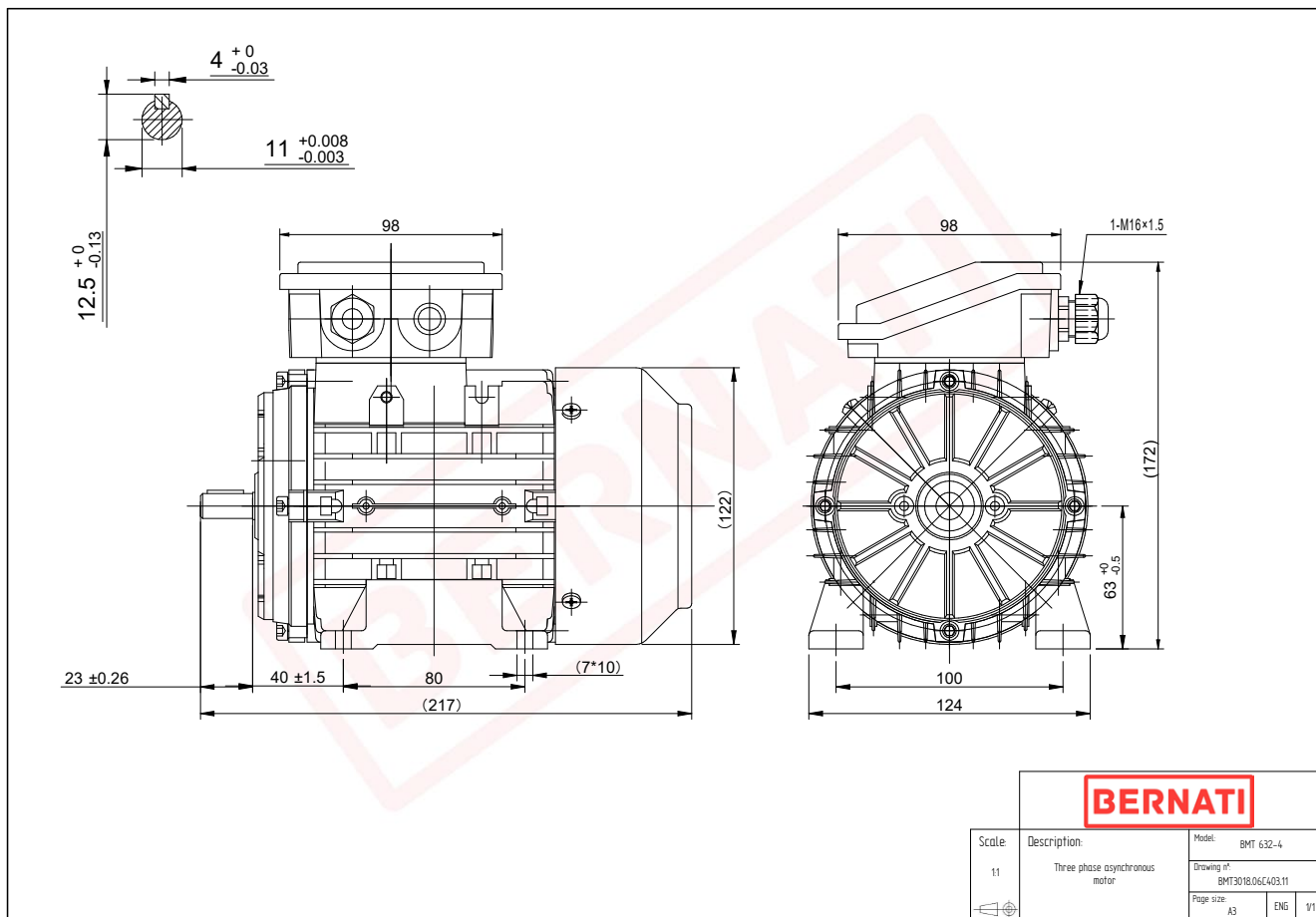


Technical Datasheet



BMT Series - Aluminum frame three phase low voltage electric motor



BMT	
Product Code	BMT3018.06C403.11
Motor Type/Frame	BMT 632-4
Mounting	IM B3
Efficiency Class	IE3
Output Power (kW)	0.18
Speed (rpm)	1400
Tension (V)	230/400
Frequency (Hz)	50
Current (A)	0.53
Power factor (Cos Ø)	0.70
Poles	4
Insulation Class	F
IP Class	IP55
50% Efficiency	65.4
75% Efficiency	69.6
100% Efficiency	69.9
Torque (Nm)	1.23
Tstart / Tnominal	2.20
Istart / Inominal	4.10
Tmax / Tnominal	2.50
Noise (dB)	52
PTC Thermistor	PTC 130
Weight (Kg)	5
DE Bearing	6201 2RZ C3
NDE Bearing	6201 2RZ C3