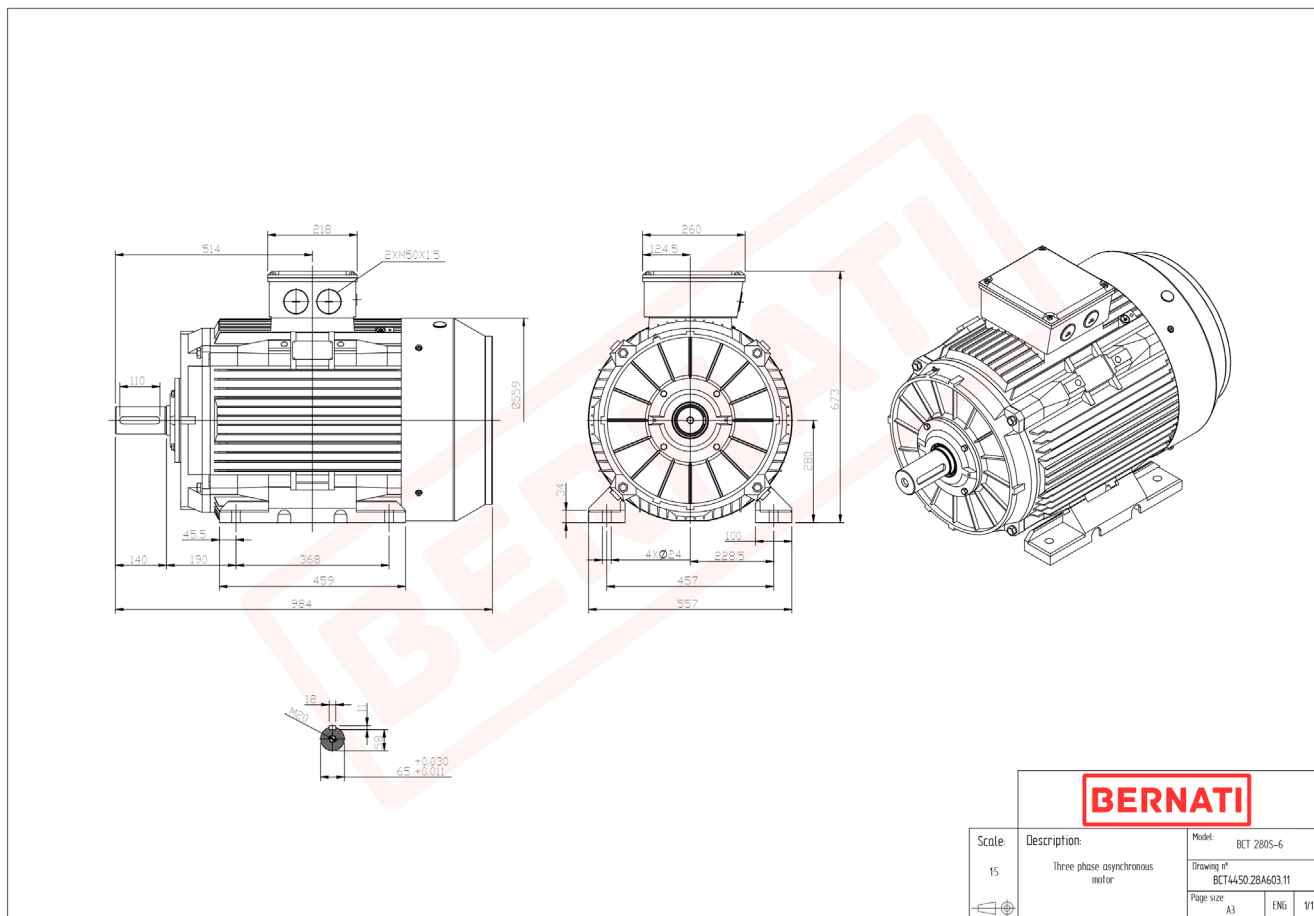


# Technical Datasheet

**BERNATI**

BCT Series - Cast iron frame three phase low voltage electric motor



## BCT

Product Code	BCT4450.28A603.11
Motor Type/Frame	BCT 280S-6
Mounting	IM B3
Efficiency Class	IE4
Output Power (kW)	45.00
Speed (rpm)	985
Tension (V)	230/400
Frequency (Hz)	50
Current (A)	82.60
Power factor (Cos Ø)	0.80
Poles	6
Insulation Class	F
IP Class	IP55
50% Efficiency	94.7
75% Efficiency	95.0
100% Efficiency	94.8
Torque (Nm)	436.50
Tstart / Tnominal	2.00
Istart / Inominal	8.50
Tmax / Tnominal	2.00
Noise (dB)	78
PTC Thermistor	PTC 130
Weight (Kg)	533
DE Bearing	6316 C3
NDE Bearing	6316 C3