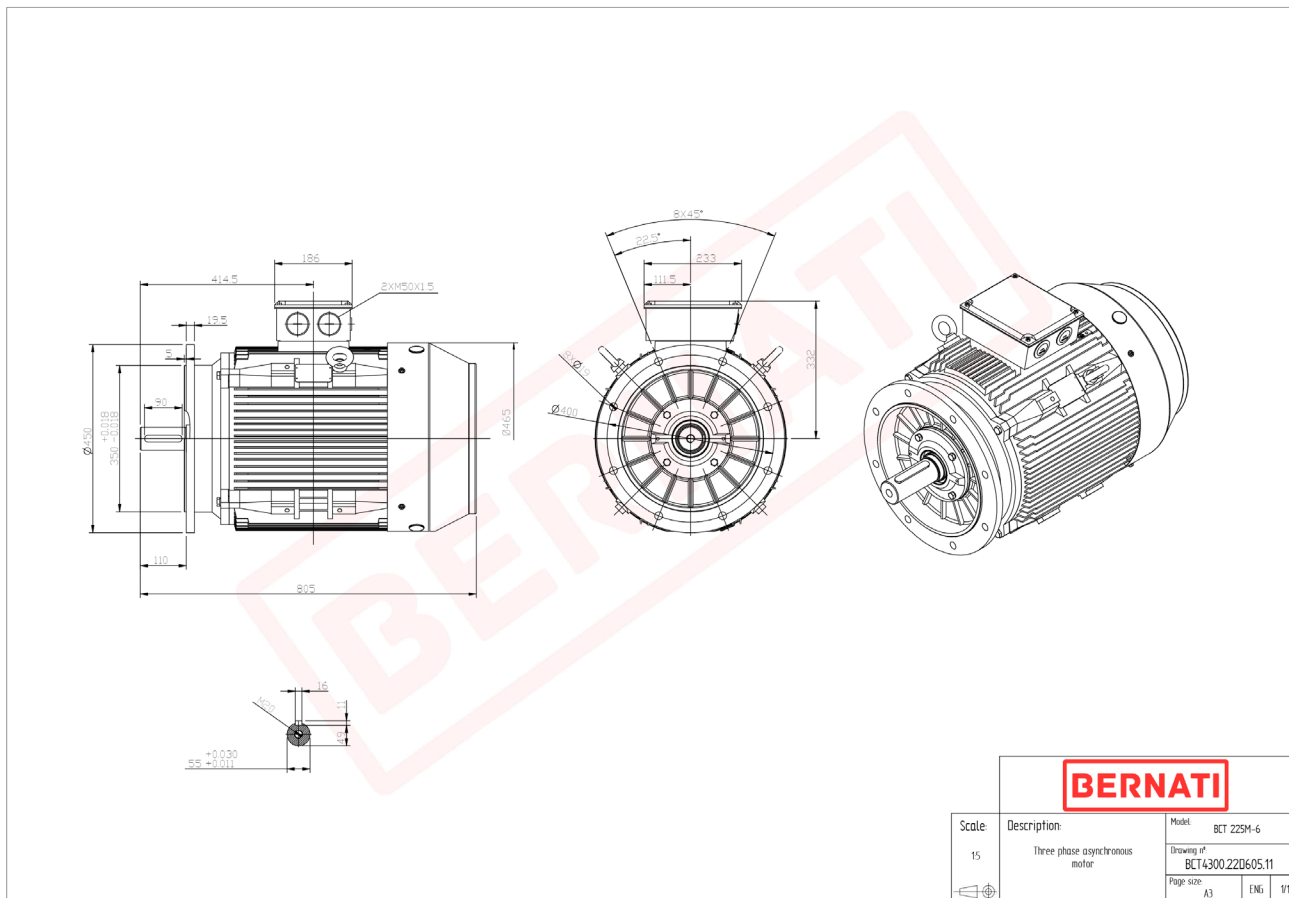


Technical Datasheet

BERNATI

BCT Series - Cast iron frame three phase low voltage electric motor



BCT

Product Code	BCT4300.22D605.11
Motor Type/Frame	BCT 225M-6
Mounting	IM B5
Efficiency Class	IE4
Output Power (kW)	30.00
Speed (rpm)	980
Tension (V)	230/400
Frequency (Hz)	50
Current (A)	56.10
Power factor (Cos Ø)	0.80
Poles	6
Insulation Class	F
IP Class	IP55
50% Efficiency	94.0
75% Efficiency	94.4
100% Efficiency	94.2
Torque (Nm)	292.50
Tstart / Tnominal	2.00
Istart / Inominal	8.30
Tmax / Tnominal	2.10
Noise (dB)	74
PTC Thermistor	PTC 130
Weight (Kg)	351
DE Bearing	6313 C3
NDE Bearing	6313 C3