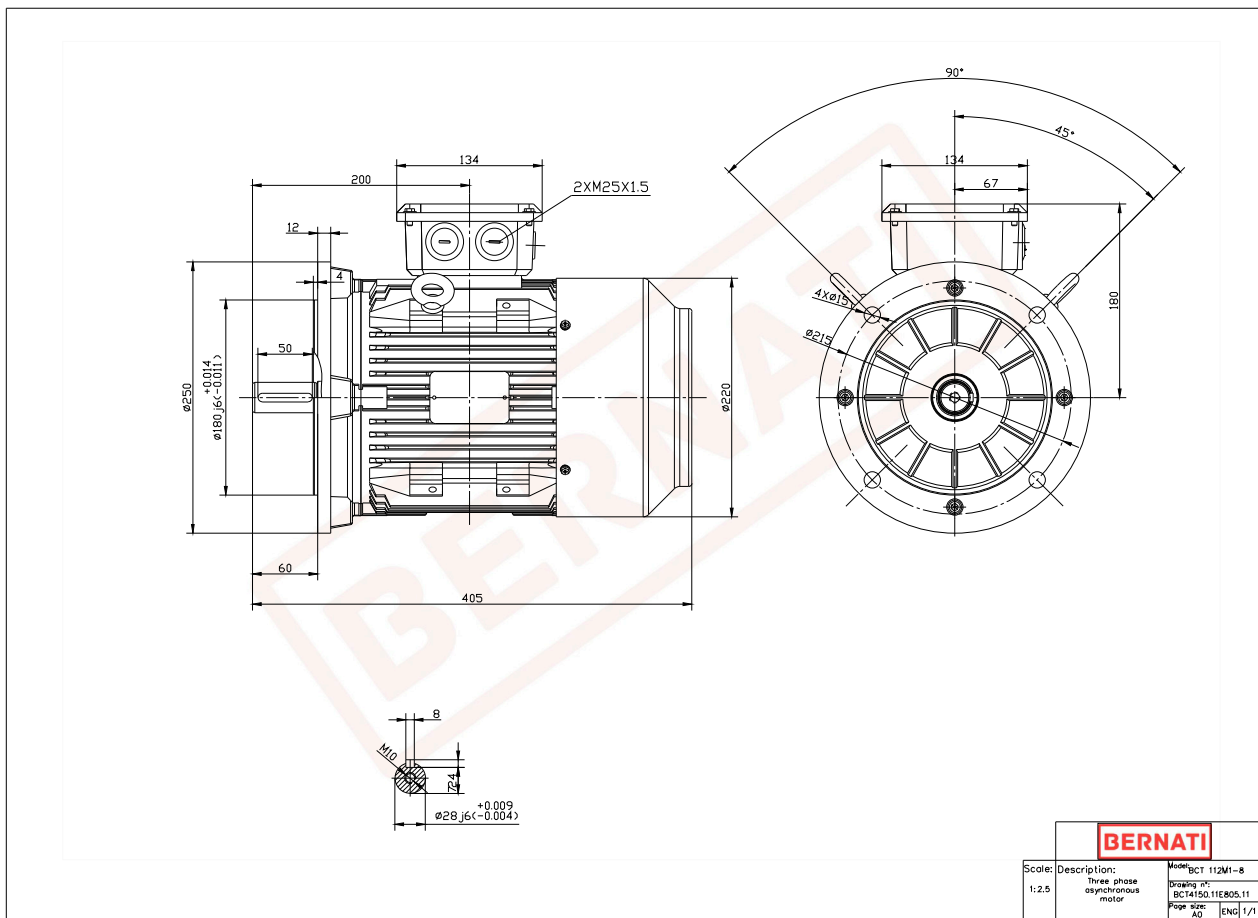


BCT Series - Cast iron frame three phase low voltage electric motor



BCT

Product Code	BCT4150.11E805.11
Motor Type/Frame	BCT 112M1-8
Mounting	IM B5
Efficiency Class	IE4
Output Power (kW)	1.50
Speed (rpm)	710
Tension (V)	230/400
Frequency (Hz)	50
Current (A)	3.80
Power factor (Cos Ø)	0.70
Poles	8
Insulation Class	F
IP Class	IP55
50% Efficiency	82.4
75% Efficiency	82.8
100% Efficiency	82.6
Torque (Nm)	29.20
Tstart / Tnominal	2.00
Istart / Inominal	7.00
Tmax / Tnominal	2.00
Noise (dB)	61
PTC Thermistor	PTC 130
Weight (Kg)	39
DE Bearing	6306 2RZ C3
NDE Bearing	6306 2RZ C3