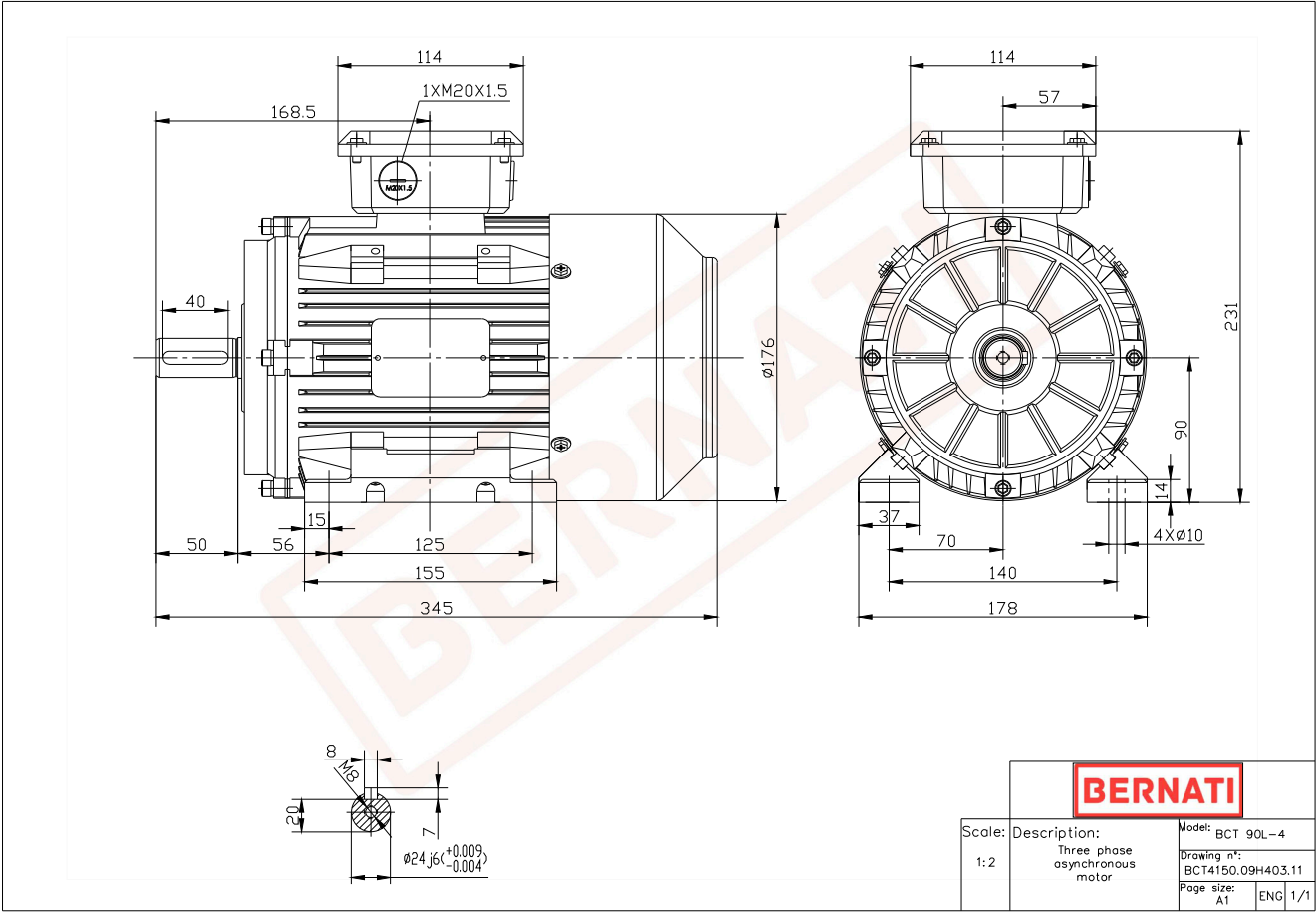


BCT Series - Cast iron frame three phase low voltage electric motor



BCT

Product Code	BCT4150.09H403.11
Motor Type/Frame	BCT 90L-4
Mounting	IM B3
Efficiency Class	IE4
Output Power (kW)	1.50
Speed (rpm)	1445
Tension (V)	230/400
Frequency (Hz)	50
Current (A)	3.20
Power factor (Cos Ø)	0.80
Poles	4
Insulation Class	F
IP Class	IP55
50% Efficiency	87.1
75% Efficiency	88.4
100% Efficiency	88.2
Torque (Nm)	9.90
Tstart / Tnominal	2.30
Istart / Inominal	9.00
Tmax / Tnominal	2.30
Noise (dB)	59
PTC Thermistor	PTC 130
Weight (Kg)	31
DE Bearing	6205 2RZ C3
NDE Bearing	6205 2RZ C3