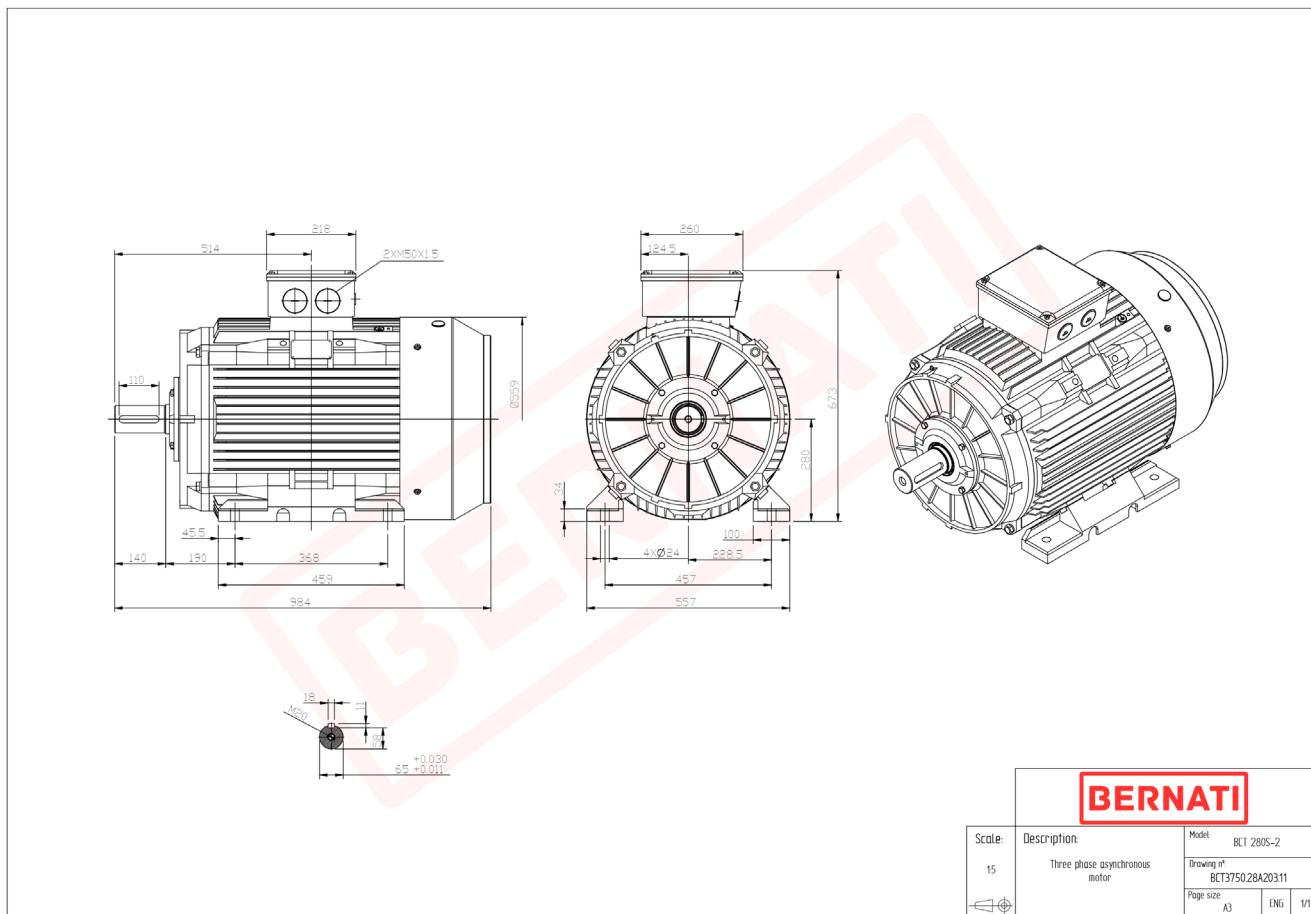


# Technical Datasheet

**BERNATI**

BCT Series - Cast iron frame three phase low voltage electric motor



## BCT

Product Code	BCT3750.28A203.11
Motor Type/Frame	BCT 280S-2
Mounting	IM B3
Efficiency Class	IE3
Output Power (kW)	75.00
Speed (rpm)	2960
Tension (V)	230/400
Frequency (Hz)	50
Current (A)	125.60
Power factor (Cos Ø)	0.90
Poles	2
Insulation Class	F
IP Class	IP55
50% Efficiency	93.7
75% Efficiency	94.9
100% Efficiency	94.7
Torque (Nm)	242.00
Tstart / Tnominal	2.50
Istart / Inominal	10.00
Tmax / Tnominal	2.60
Noise (dB)	94
PTC Thermistor	PTC 130
Weight (Kg)	587
DE Bearing	6316 C3
NDE Bearing	6316 C3