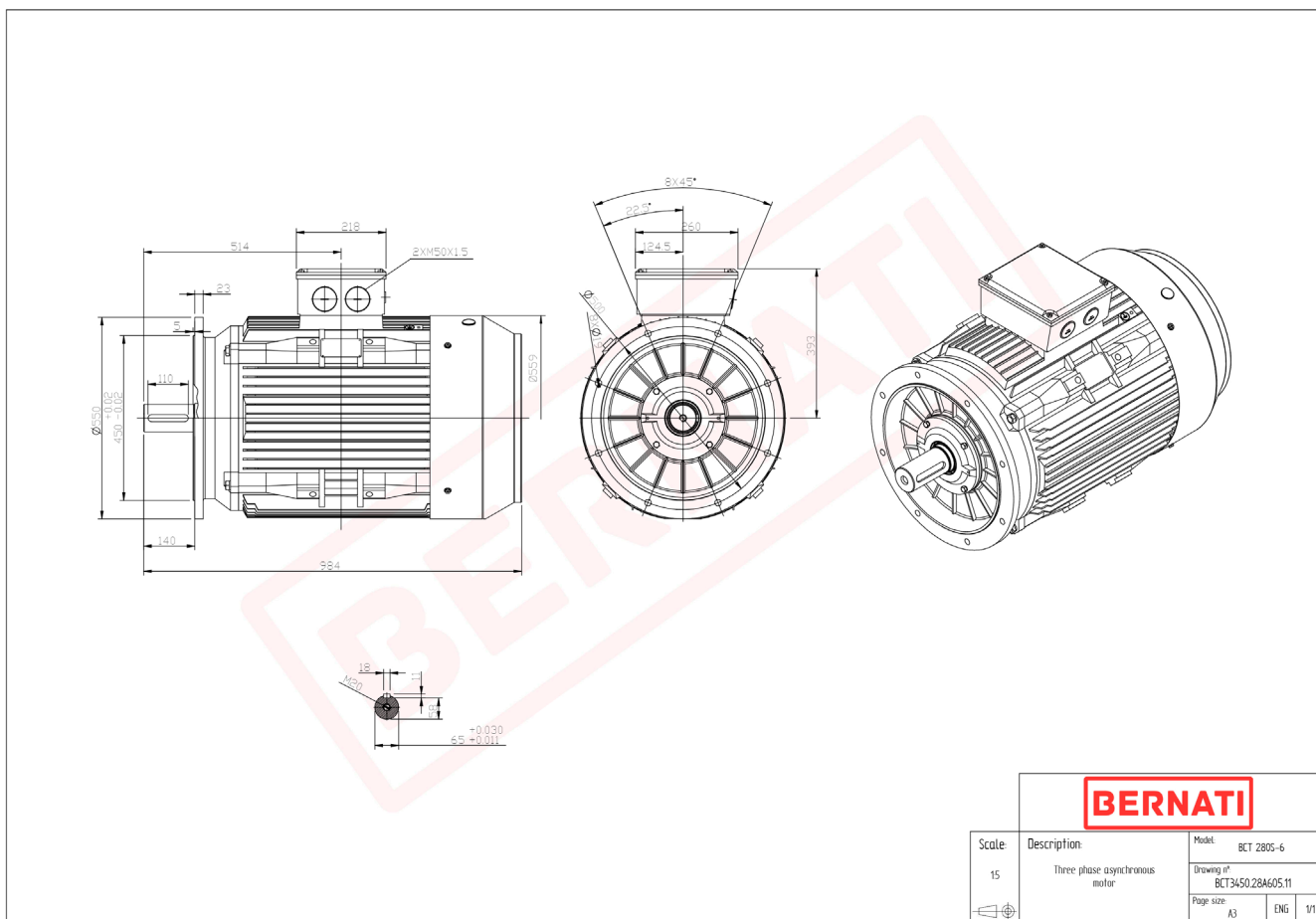


Technical Datasheet

BERNATI

BCT Series - Cast iron frame three phase low voltage electric motor



BCT

Product Code	BCT3450.28A605.11
Motor Type/Frame	BCT 280S-6
Mounting	IM B5
Efficiency Class	IE3
Output Power (kW)	45.00
Speed (rpm)	980
Tension (V)	230/400
Frequency (Hz)	50
Current (A)	83.50
Power factor (Cos Ø)	0.80
Poles	6
Insulation Class	F
IP Class	IP55
50% Efficiency	92.7
75% Efficiency	94.6
100% Efficiency	93.7
Torque (Nm)	438.50
Tstart / Tnominal	2.50
Istart / Inominal	10.00
Tmax / Tnominal	2.80
Noise (dB)	80
PTC Thermistor	PTC 130
Weight (Kg)	551
DE Bearing	6316 C3
NDE Bearing	6316 C3