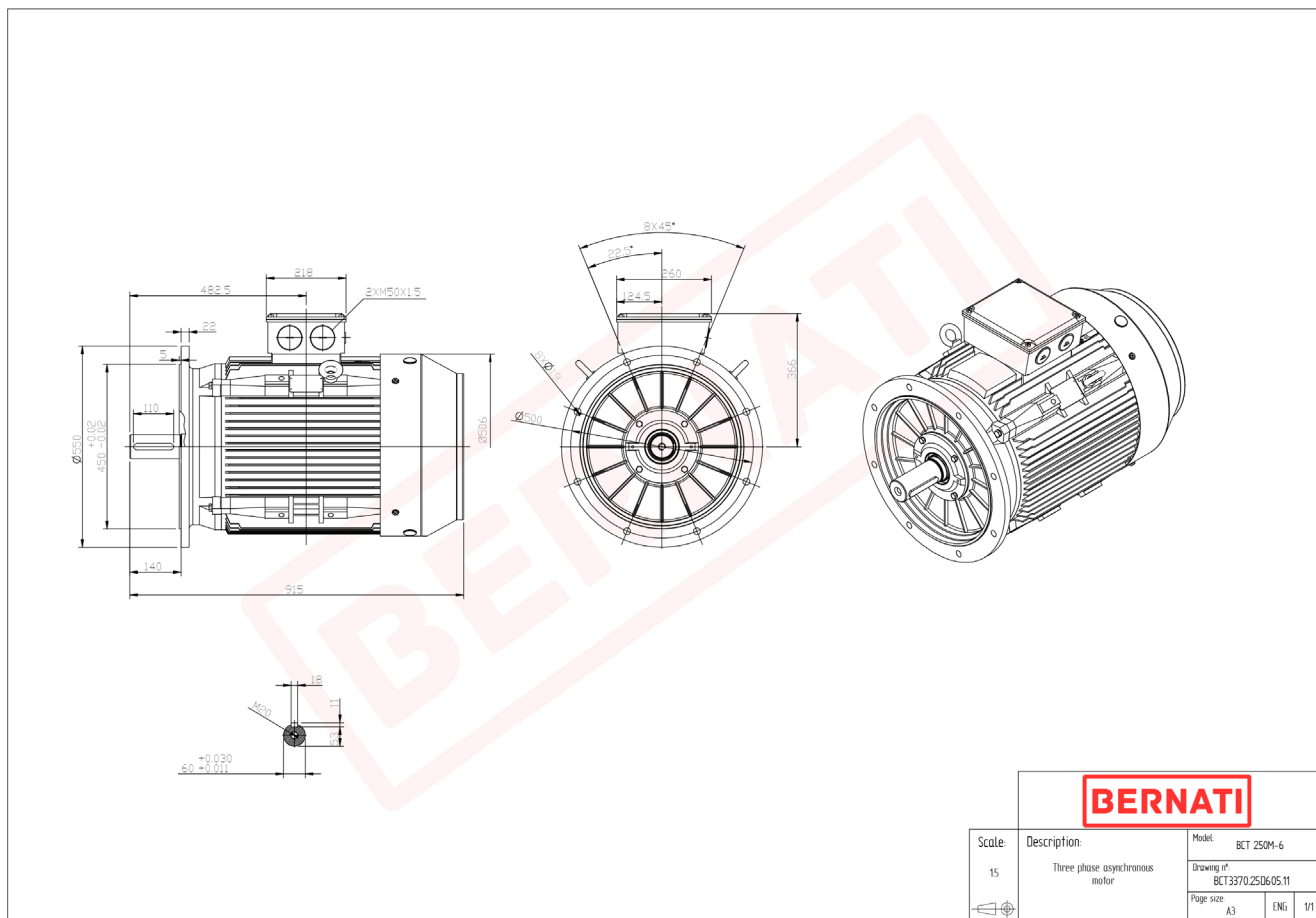


Technical Datasheet

BERNATI

BCT Series - Cast iron frame three phase low voltage electric motor



BCT

Product Code	BCT3370.25D605.11
Motor Type/Frame	BCT 250M-6
Mounting	IM B5
Efficiency Class	IE3
Output Power (kW)	37.00
Speed (rpm)	975
Tension (V)	230/400
Frequency (Hz)	50
Current (A)	67.30
Power factor (Cos Ø)	0.90
Poles	6
Insulation Class	F
IP Class	IP55
50% Efficiency	91.8
75% Efficiency	94.0
100% Efficiency	93.3
Torque (Nm)	362.40
Tstart / Tnominal	1.80
Istart / Inominal	7.00
Tmax / Tnominal	2.00
Noise (dB)	78
PTC Thermistor	PTC 130
Weight (Kg)	399
DE Bearing	6314 C3
NDE Bearing	6314 C3