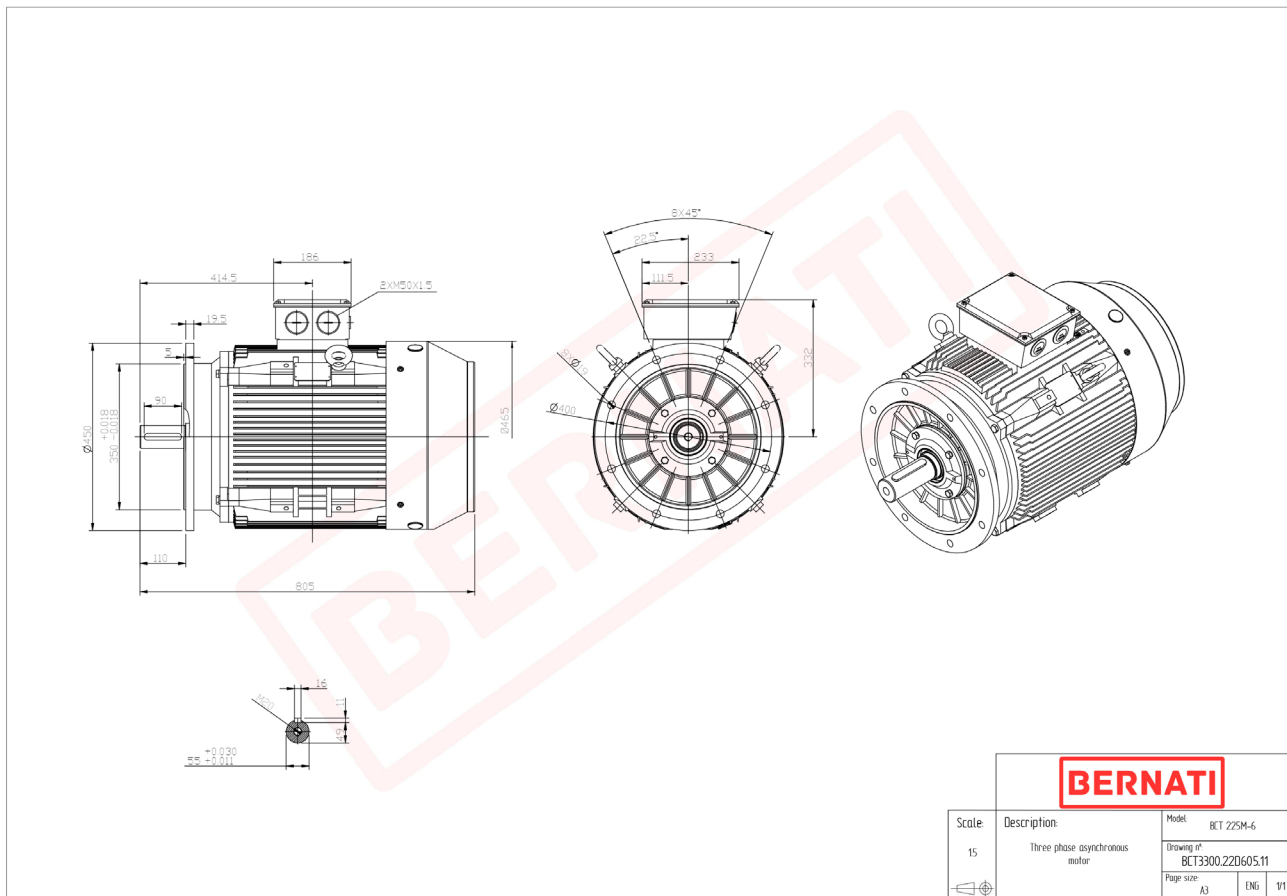


# Technical Datasheet

**BERNATI**

BCT Series - Cast iron frame three phase low voltage electric motor



## BCT

Product Code	BCT3300.22D605.11
Motor Type/Frame	BCT 225M-6
Mounting	IM B5
Efficiency Class	IE3
Output Power (kW)	30.00
Speed (rpm)	975
Tension (V)	230/400
Frequency (Hz)	50
Current (A)	53.00
Power factor (Cos Ø)	0.90
Poles	6
Insulation Class	F
IP Class	IP55
50% Efficiency	90.9
75% Efficiency	93.8
100% Efficiency	92.9
Torque (Nm)	293.90
Tstart / Tnominal	1.80
Istart / Inominal	7.00
Tmax / Tnominal	2.20
Noise (dB)	76
PTC Thermistor	PTC 130
Weight (Kg)	339
DE Bearing	6313 C3
NDE Bearing	6313 C3