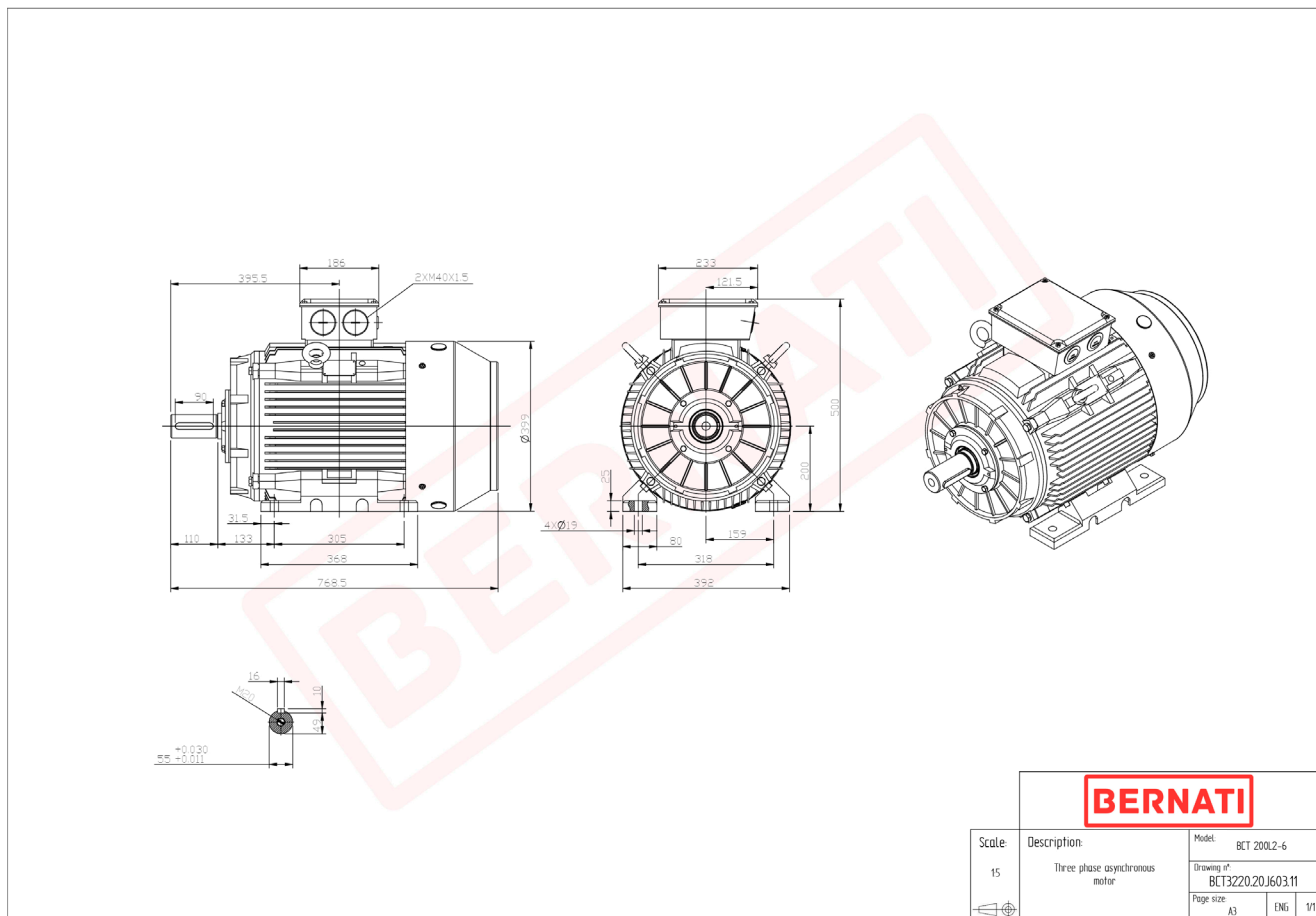


Technical Datasheet

BERNATI

BCT Series - Cast iron frame three phase low voltage electric motor



BCT

Product Code	BCT3220.20J603.11
Motor Type/Frame	BCT 200L2-6
Mounting	IM B3
Efficiency Class	IE3
Output Power (kW)	22.00
Speed (rpm)	970
Tension (V)	230/400
Frequency (Hz)	50
Current (A)	42.50
Power factor (Cos Ø)	0.80
Poles	6
Insulation Class	F
IP Class	IP55
50% Efficiency	91.3
75% Efficiency	93.0
100% Efficiency	92.2
Torque (Nm)	216.60
Tstart / Tnominal	2.50
Istart / Inominal	10.00
Tmax / Tnominal	2.80
Noise (dB)	76
PTC Thermistor	PTC 130
Weight (Kg)	249
DE Bearing	6312 C3
NDE Bearing	6312 C3