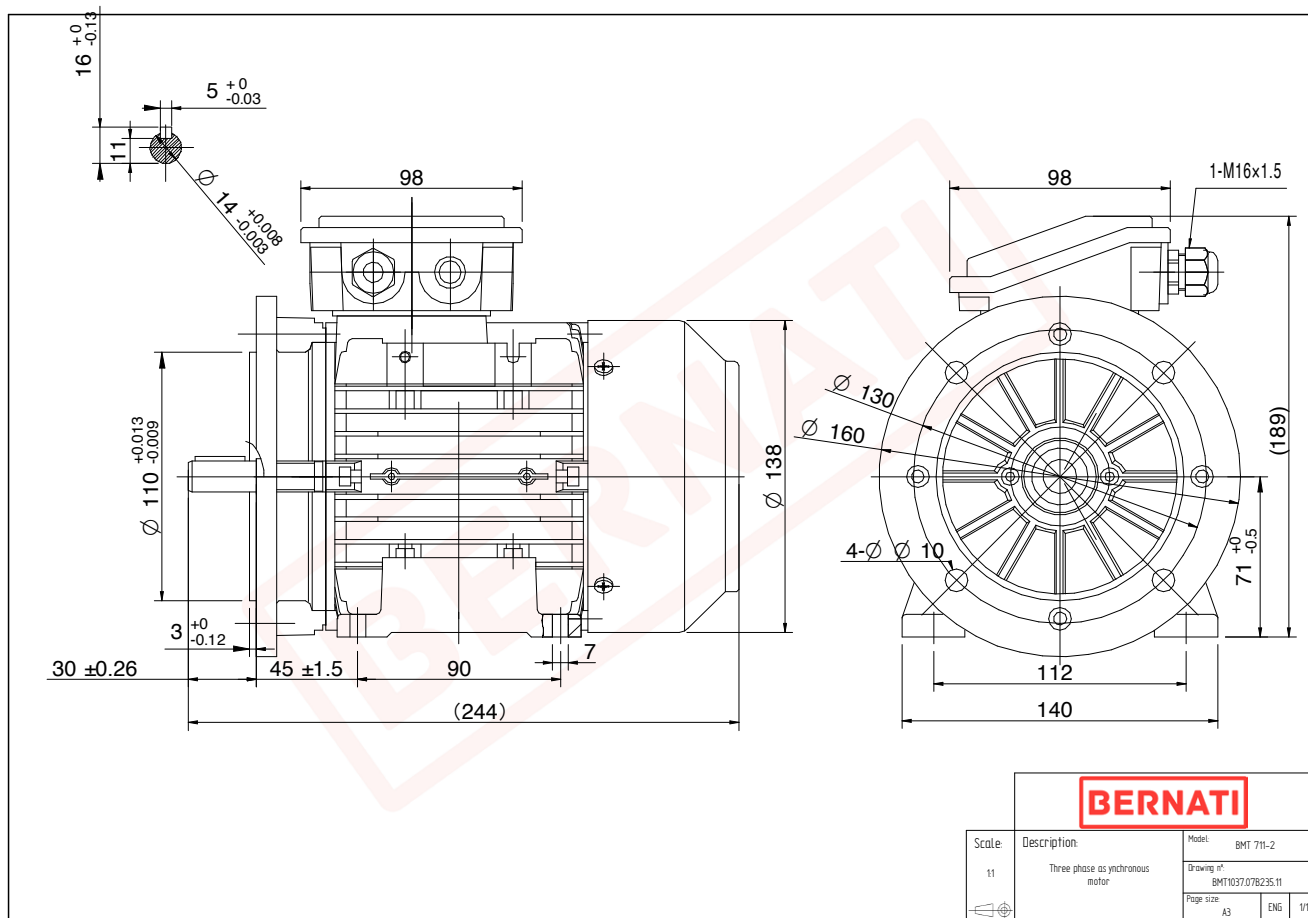


Technical Datasheet

BERNATI

BMT Series - Aluminum frame three phase low voltage electric motor



BMT

Product Code	BMT1037.07B235.11
Motor Type/Frame	BMT 711-2
Mounting	IM B3/B5
Efficiency Class	IE1
Output Power (kW)	0.37
Speed (rpm)	2840
Tension (V)	230/400
Frequency (Hz)	50
Current (A)	0.91
Power factor (Cos Ø)	0.82
Poles	2
Insulation Class	F
IP Class	IP55
50% Efficiency	65.8
75% Efficiency	70.9
100% Efficiency	71.5
Torque (Nm)	1.20
Tstart / Tnominal	2.00
Istart / Inominal	5.10
Tmax / Tnominal	2.20
Noise (dB)	64
PTC Thermistor	N/A
Weight (Kg)	5
DE Bearing	6202 2RZ C3
NDE Bearing	6202 2RZ C3