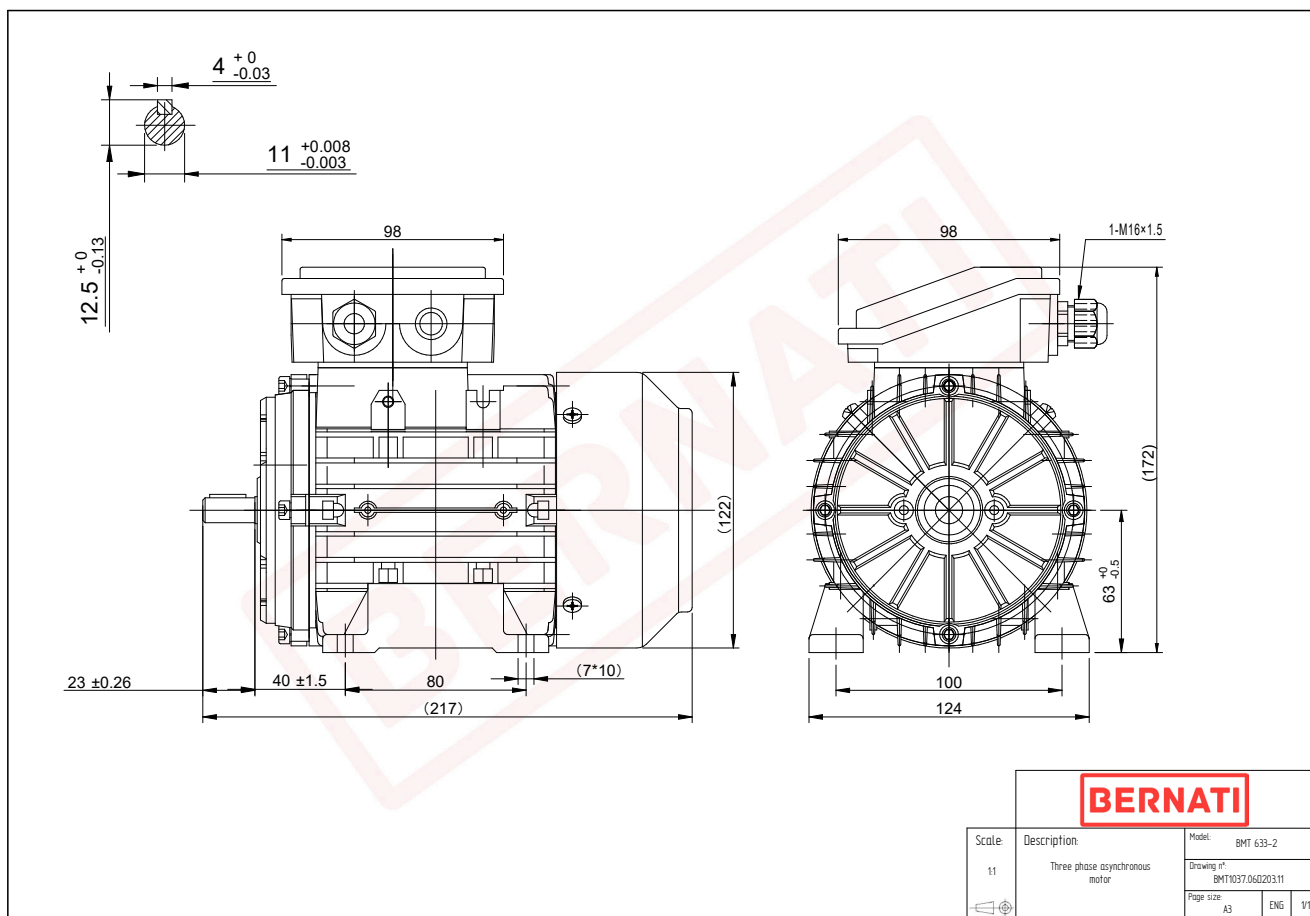


Technical Datasheet

BERNATI

BMT Series - Aluminum frame three phase low voltage electric motor



BMT

Product Code	BMT1037.06D203.11
Motor Type/Frame	BMT 633-2
Mounting	IM B3
Efficiency Class	IE1
Output Power (kW)	0.37
Speed (rpm)	2840
Tension (V)	230/400
Frequency (Hz)	50
Current (A)	0.98
Power factor (Cos Ø)	0.78
Poles	2
Insulation Class	F
IP Class	IP55
50% Efficiency	61.2
75% Efficiency	65.6
100% Efficiency	69.8
Torque (Nm)	1.20
Tstart / Tnominal	2.00
Istart / Inominal	5.10
Tmax / Tnominal	2.40
Noise (dB)	62
PTC Thermistor	N/A
Weight (Kg)	5
DE Bearing	6201 2RZ C3
NDE Bearing	6201 2RZ C3