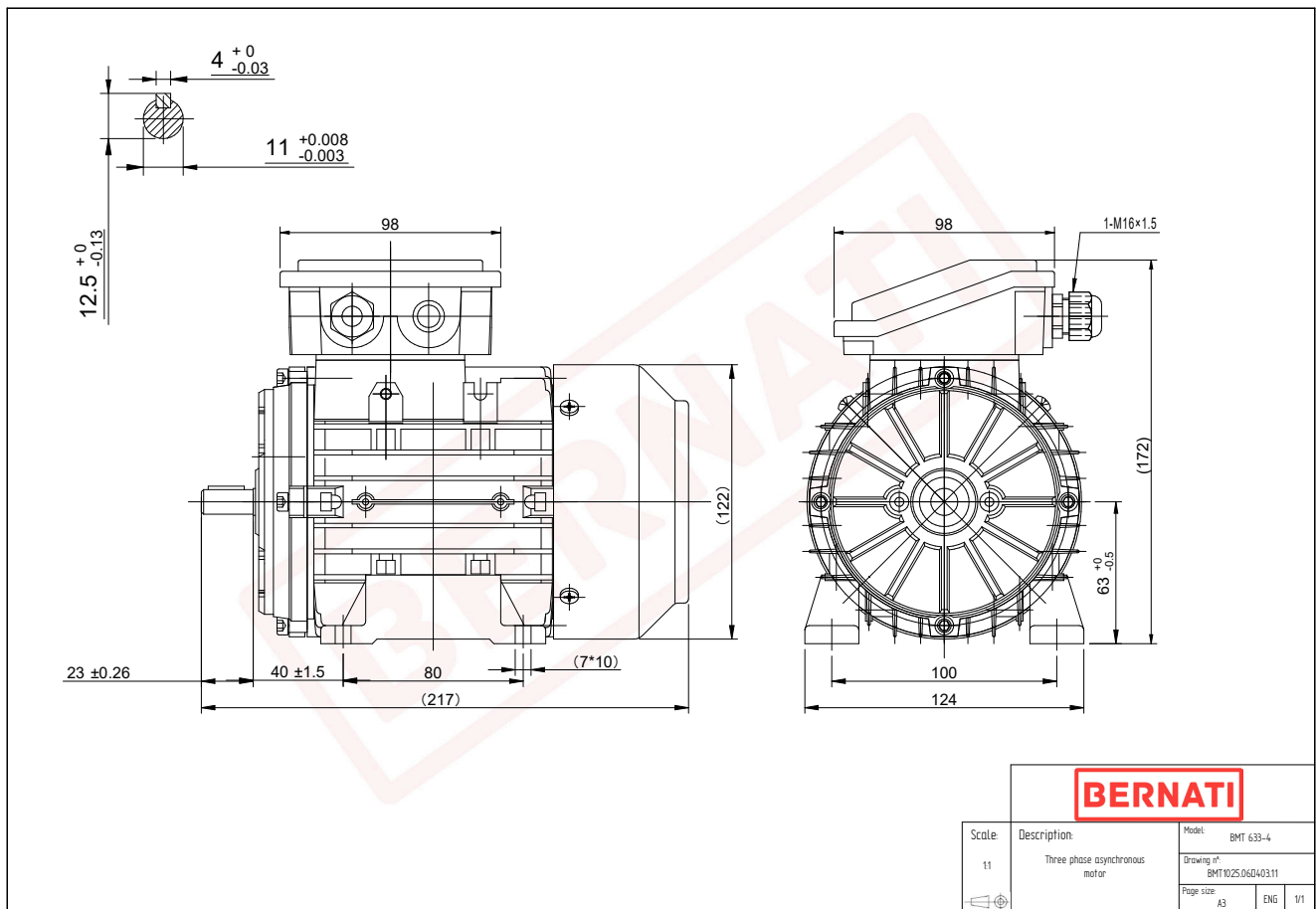


Technical Datasheet

BERNATI

BMT Series - Aluminum frame three phase low voltage electric motor



BMT	
Product Code	BMT1025.06D403.11
Motor Type/Frame	BMT 633-4
Mounting	IM B3
Efficiency Class	IE1
Output Power (kW)	0.25
Speed (rpm)	1360
Tension (V)	230/400
Frequency (Hz)	50
Current (A)	0.71
Power factor (Cos Ø)	0.74
Poles	4
Insulation Class	F
IP Class	IP55
50% Efficiency	65.1
75% Efficiency	68.8
100% Efficiency	68.5
Torque (Nm)	1.80
Tstart / Tnominal	2.10
Istart / Inominal	3.90
Tmax / Tnominal	2.30
Noise (dB)	54
PTC Thermistor	N/A
Weight (Kg)	5
DE Bearing	6201 2RZ C3
NDE Bearing	6201 2RZ C3