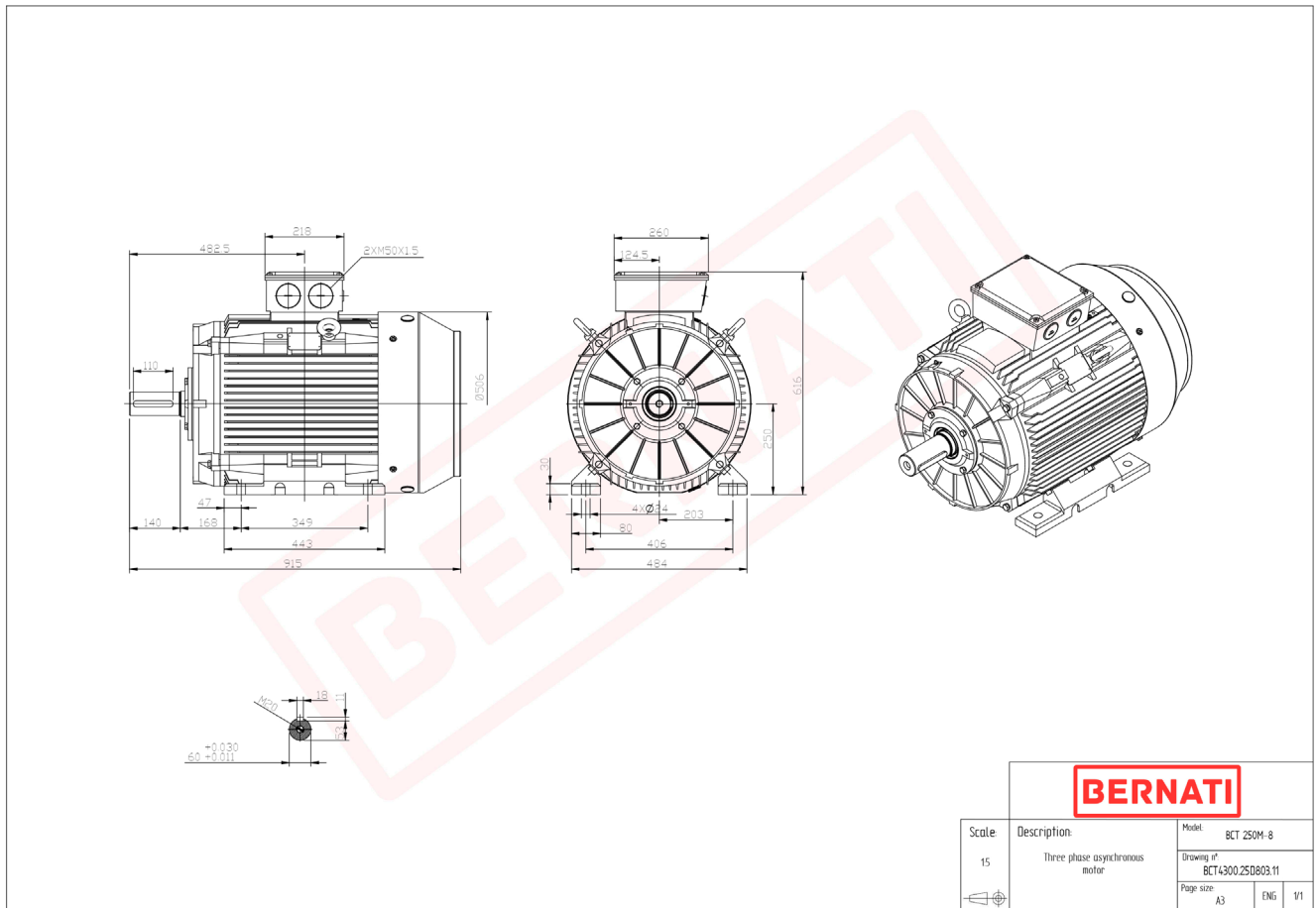


Technical Datasheet

BERNATI

BCT Series - Cast iron frame three phase low voltage electric motor



BCT

Product Code	BCT4300.25D803.11
Motor Type/Frame	BCT 250M-8
Mounting	IM B3
Efficiency Class	IE4
Output Power (kW)	30.00
Speed (rpm)	740
Tension (V)	230/400
Frequency (Hz)	50
Current (A)	60.70
Power factor (Cos Ø)	0.80
Poles	8
Insulation Class	F
IP Class	IP55
50% Efficiency	92.6
75% Efficiency	92.9
100% Efficiency	92.7
Torque (Nm)	387.30
Tstart / Tnominal	1.80
Istart / Inominal	7.90
Tmax / Tnominal	2.00
Noise (dB)	75
PTC Thermistor	PTC 130
Weight (Kg)	383
DE Bearing	6314 C3
NDE Bearing	6314 C3